

The Voice of New Mexico's
Rural Electric Cooperatives

enchantment

FARMERS' ELECTRIC
COOPERATIVE

FEBRUARY 2024

On the Road in

Abiquiu

Follow in the footsteps
of famed artist Georgia
O'Keeffe **Page 14**



Cafe Abiquiu and La Teraza serve up delicious meals not far from the Georgia O'Keeffe Welcome Center. PHOTO BY LONNIE TUCKER

GMCS MEDIA MAVENS



School of
Media

Crafting Tomorrow's Storytellers

The School of Media offers a specialized academic program across communication and media production disciplines, emphasizing hands-on experiences, collaborative learning, and exposure to real-world challenges. It aims to inspire and equip students with essential knowledge and skills for advanced education or careers in the dynamic field of media production and communication.

Our hands-on approach fosters a deep understanding of media techniques, encouraging creativity from honing writing skills to mastering digital production intricacies. Through practical projects, students gain comprehensive experience in content creation, editing, and multimedia storytelling, preparing them for the dynamic demands of the media industry.

Committed to shaping well-rounded individuals, our curriculum integrates critical media literacy, emphasizing ethical practices and responsible consumption. With a focus on real-world applications, our courses empower students to navigate the complexities of the media landscape, ensuring they excel in their chosen paths. The School of Media is more than an academy; it's a launchpad for young, creative minds to explore, learn, and shape the narratives of tomorrow.

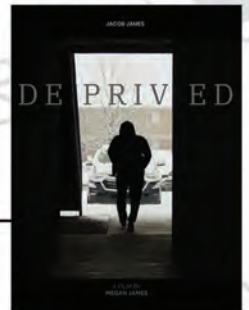


FILM PRIZE[®] NM



On December 18, 2023 Film Prize Jr. hosted a Kickoff Event at our very own El Morro Theatre in downtown Gallup. Media students from 3 area high schools and 1 middle school attended this private event. Three prize winning student films were screened,

including Megan James, "The Sound of Drums". Native Star Studios and Knifewing Segura, mentors Lonie Begay, Loren Anthony, and Megan James were on hand to speak directly to our media students on the art of film making.



DEPRAVED TAKES TOP HONORS

GMCS Entered the 2023 Film Prize Jr. with "The Cat did it" from Denzel Howe & Jacob Gruber of Tohatchi High School, "#135: Hubris" from Aloni Herrera of Miyamura High School and finally "Deprived" from Megan James of Miyamura High School. Megan James' film was awarded BEST DRAMA as well as being selected as the 2023 GRAND PRIZE WINNER for the High School category.



enchantment (ISSN 0046-1946) is published 10 times a year—every month except June and December—by the New Mexico Rural Electric Cooperatives, 614 Don Gaspar Ave., Santa Fe, NM 87505. enchantment provides reliable, helpful information on rural living and energy use to electric cooperative members and customers.

More than 113,000 families and businesses receive enchantment magazine as electric cooperative members. Nonmember subscriptions are available at \$12 a year or \$18 for two years, payable to NMREC. Allow four to eight weeks for first delivery.

PERIODICAL POSTAGE paid at Santa Fe, NM 87501-9998 and additional mailing offices.

CHANGE OF ADDRESS: Postmaster, please send address changes to 614 Don Gaspar Ave., Santa Fe, NM 87505-4428. Readers who receive the publication through their electric cooperative membership should report address changes to their local electric cooperative office.

THE NEW MEXICO RURAL ELECTRIC COOPERATIVES provide legislative and educational services to the cooperatives that are members of the association and deliver electric power to New Mexico's rural areas and small communities. The mission of the New Mexico Rural Electric Cooperatives is to strengthen, support, unify and represent cooperative member interests at the local, state and national levels. Each cooperative has a representative on the association's board of directors, which controls the editorial content and advertising policy of enchantment through its Publications Committee.

OFFICERS OF THE BOARD OF DIRECTORS

Tim Morrow, President, Springer Electric Co-op, Springer; Charles G. Wagner, Vice President, Western Farmers Electric Co-op, Anadarko, Oklahoma; Duane Frost, Secretary-Treasurer, Central NM Electric Co-op, Mountainair.

BOARD OF DIRECTORS

Charles Pinson, Central Valley Electric Co-op, Artesia; Chris Martinez, Columbus Electric Co-op, Deming; Keith Gottlieb, Continental Divide Electric Co-op, Grants; Antonio Sanchez, Farmers' Electric Co-op, Clovis; Manny Bustos, Jemez Mountains Electric, Española; Bobby Ferris, Lea County Electric Co-op, Lovington; James Ortiz, Mora-San Miguel Electric Cooperative, Mora; Thomas G. Rivas, Northern Rio Arriba Electric Co-op, Chama; Preston Stone, Otero County Electric Co-op, Cloudcroft; Gene Creighton, Roosevelt County Electric Co-op, Portales; George Biel, Sierra Electric Co-op, Elephant Butte; Joseph Herrera, Socorro Electric Co-op, Socorro; Joe Reeser, Southwestern Electric Co-op, Clayton; Wayne Connell, Tri-State G&T Association, Westminster, Colorado.

NEW MEXICO RURAL ELECTRIC COOPERATIVES

614 Don Gaspar Ave. Phone: 505-982-4671
Santa Fe, NM 87505 Fax: 505-982-0153
nmelectric.coop enchantment.coop

Charise M. Swanson, CEO, cswanson@nmelectric.coop
Lonnie Tucker, Vice President, Communications, ltucker@nmelectric.coop

DISPLAY ADVERTISING: Rates available upon request. Co-op members and New Mexico display advertisers, email Shaylyn at enchantmentads@nmelectric.coop or call 505-252-2540. National representative: American MainStreet Publications, 800-626-1181.

Advertisements in enchantment are paid solicitations and are not endorsed by the publisher or the electric cooperatives that are members of the New Mexico Rural Electric Cooperatives. **PRODUCT SATISFACTION AND DELIVERY RESPONSIBILITY LIE SOLELY WITH THE ADVERTISER.**

© 2024 New Mexico Rural Electric Cooperatives, in partnership with Pioneer Utility Resources. Reproduction prohibited without written permission of the publisher.

February 2024 CONTENTS

- 04 Your Electric Co-op
- 06 The enchanted CEO
- 10 Hale to the Stars
- 12 The Mysterious Cloud
- 14 On the Road in Abiquiu
- 20 On the Menu
- 22 The Market Place
- 30 Youth Art



Take a photo of you holding YOUR MAGAZINE AND WIN!

Take a photo of yourself or someone else with the magazine and email it with a few words about the photo. Include your name, mailing address and co-op name.

One lucky member will win \$20. Submitting your photo(s) gives us permission to publish or post the photo(s) in enchantment, on Facebook and in other media outlets.

Email tcondit@nmelectric.coop

Congratulations to Sam Quintana, a Jemez Mountains Electric Cooperative member, whose grandfather, Narciso, pictured, read his enchantment in six-inches of snow.

Sam Quintana wins \$20!





General Manager
Antonio Sanchez Jr.

Clovis Office
3701 Thornton St.
Clovis, NM 88102
575-762-4466

Ft. Sumner Office
618 E. Sumner Ave.
Fort Sumner, NM 88119
575-355-2291

Santa Rosa Office
1169 Historic Route 66
Santa Rosa, NM 88435
575-472-3971

Report an After-Hours Outage
800-445-8541

Website
www.fecnm.org

Office Hours
8 a.m. to 5 p.m. (M-F)

"Owned By Those We Serve"

Board of Trustees

President
Michael B. West
Fort Sumner, District 3

Vice President
George Dodge Jr.
Santa Rosa, District 4

Secretary-Treasurer
Donnie Bidegain
San Jon/Logan, District 7

Judy Smith
Tucumcari-Ragland, District 5

Jubal Pierce
Melrose, District 2

Justin Barnes
Clovis, District 1

John Pat Woods
Broadview/Grady, District 6

Board Meeting

The Board of Trustees meets at 9 a.m. the fourth Tuesday of the month in the Clovis cooperative boardroom.

This institution is an equal opportunity provider and employer.

SAFETY 101

USING GENERATORS AT HOME



1

Do not attempt to connect a standby generator to your home's electrical system yourself. There are only two safe ways to connect a standby generator to your home and/or equipment: by using a stationary or portable generator.

2

When using a stationary generator, a licensed professional electrician should install an approved generator transfer switch, which keeps your house circuits isolated from Farmers' Electric.

3

If you're using a portable generator, plug appliances directly into the outlet provided on the generator.

4

Set up and run your generator in a well-ventilated area outside of the home. Make sure it's away from your garage, doors, windows and vents. The carbon monoxide generated can be deadly.

5

Use a heavy-duty extension cord to connect electric appliances to the outlet on the generator.

6

Make sure the generator is full of fuel before starting. Start the generator first before connecting appliance load.

ENERGY EFFICIENCY TIP OF THE MONTH

Area rugs are an easy, cost-effective solution to cold floors. Adding area rugs to hard-surface flooring can add warmth to any room and keep your feet cozy on cold winter days.

Choose rugs made from wool or other natural fibers and plush or high-pile textures for the most insulation. Place rugs in areas where you need additional warmth, like the foot of a bed or under a coffee table. Area rugs can enhance the aesthetic of your home and keep you cozier.



Combat the Cold

Don't let recent chilly temperatures affect your cool. Farmers' Electric Cooperative has your back in times of need.

With the recent drop in temperatures over the last few weeks, members—especially those who heat with electricity—saw an increase in their bills between December and January. If the normal cold trends continue, we won't see much relief until March or April.

Higher winter heating bills have several contributing factors. As soon as the sun goes down, temperatures on the High Plains plummet, even if the high during the day was relatively mild. Couple that with high north winds and the short winter days—heating systems are operating harder and longer, using more energy as the winter cold digs in.

It is use that has increased. No one has been arbitrarily charged extra. This is a trend that regions of eastern New Mexico and west Texas alike are experiencing. Whether investor-owned, municipal or cooperative, electric utilities all have consumers wondering why their bills are higher.

Farmers' Electric members are encouraged to look closely at their bills, particularly the graph on use located in the left bottom third of your bill (13 months

of energy use history). This graph depicts how your bill trends over the year. Invoice billing with multiple accounts will not have this history.

Keeping a home warm and comfortable during cold winter days and nights often results in the use of additional heating methods, such as heat lamps, space heaters, resistance backup heat and other high-use devices. While these options may be effective during short-term cold spells, they should be limited for long periods of time as they directly impact your overall use.

This can be frustrating, but FEC wants to work with its members as much as possible. If you are lower income and/or elderly, you may qualify for help with your winter utilities through the Low Income Home Energy Assistance Program—known as LIHEAP—and the Department of Human Services.

Visit www.hsd.state.nm.us, click the "Apply for Assistance" tab and follow the instructions to set up an account. Navigate to Energy Assistance through LIHEAP.

To further help combat rising electric use, FEC offers a "Energy Savers Tips: Ways to Save Energy in Your Home" pamphlet. Call 800-445-8541 to have a pamphlet mailed directly to you.





THE ENCHANTED CEO

By Charise Swanson
New Mexico Rural Electric Cooperatives

2024 Legislative Session Begins

January 16 marked the beginning of the second session of the 56th Legislature in Santa Fe. Over the last two weeks, we have paid close attention to the pre-filed bills that could be detrimental to our New Mexico electric cooperatives.

Communicating will be very important during the 2024 legislative session. We love our enchantment magazine as a tool to provide you with a variety of information, and we also want to make sure you have real-time communication.

During a legislative session, we cannot always wait for the next issue of the enchantment, so we encourage you to follow our NMREC Facebook, Instagram and X, formerly known as Twitter, social media platforms to get the latest news during this 30-day lawmaking session.

I also encourage you to contact your local electric cooperative to make sure they have your correct contact information on your account. This is important to your cooperative and NMREC. It lets you receive important information about legislation that could affect you and your cooperative.

Your phone number and email address are also vital during emergencies, as this information can be used by your cooperative to identify and verify a power outage at your location.

Your contact information can also be used by NMREC to notify you of important legislation through Voices of Cooperative Power, a program implemented by the National Rural Electric Cooperative Association which advocates for all of our cooperatives across the nation.

Voices for Cooperative Power works to educate and influence elected officials as they make important federal and state policy decisions that impact electric cooperatives and their members.

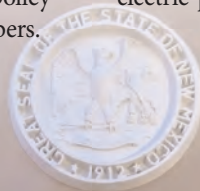
If a potential bill, joint resolution or resolution is a threat to our cooperatives—especially to our reliability and affordability—NMREC will launch a VCP grassroots campaign to have our cooperative members call or email their representatives and senators to demand they protect the ability of our cooperatives to deliver safe, affordable and reliable electricity to our rural communities in New Mexico.

Enchantment Magazine

We had great feedback from our readers regarding the changes implemented in our January issue. This edition introduces a new feature, Adventure Awaits, where we take you to Abiquiu, New Mexico. Abiquiu was once the home of Georgia O’Keeffe, the “mother of American modernism.”

Another change premiering this month is Around New Mexico, a monthly calendar of events created by our members who submit event information from regions across the state. Check out page 27 of this issue, and let us know if there is an event you would like to see added to the calendar.

In March, we will introduce “Millennial Viewpoint” to provide our readers with a different viewpoint through the eyes of a millennial. Another feature premiering in March is the “Electric Vehicle Experience,” which will give an uncensored look into life with an electric vehicle. This guest article is written by Mark Faulkenberry, vice president of marketing and member relations at Western Farmers Electric Cooperative, who provide power to four of our electric cooperatives. We look forward to his article and electric-powered adventures next month. 📱



The Invention of the Year

The world's most fun-to-drive and portable mobility device

Once in a lifetime, a product comes along that truly moves people. Introducing the future of battery-powered personal transportation . . . *The Zinger*.

Throughout the ages, there have been many important advances in mobility. Canes, walkers, rollators, and scooters were created to help people with mobility issues get around and retain their independence. Lately, however, there haven't been any new improvements to these existing products or developments in this field. Until now. Recently, an innovative design engineer who's developed one of the world's most popular products created a completely new breakthrough . . . a personal electric vehicle. It's called the *Zinger*, and there is nothing out there quite like it.

"What my wife especially loves is it gives her back feelings of safety and independence which has given a real boost to her confidence and happiness! Thank You!"

-Kent C., California

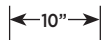
The first thing you'll notice about the *Zinger* is its unique look. It doesn't look like a scooter. Its sleek, lightweight yet durable frame is made with aircraft grade aluminum so it weighs only 47.2 lbs. It features one-touch folding and unfolding - when folded it can be wheeled around like a suitcase and fits easily into a backseat or trunk. Then, there are the steering levers. They enable the *Zinger* to move forward, backward, turn on a dime and even pull right up to a table or desk. With its compact yet powerful



Available in Black and Blue (shown)

motor it can go up to 6 miles an hour and its rechargeable battery can go up to 8 miles on a single charge. With its low center of gravity and inflatable tires it can handle rugged terrain and is virtually tip-proof. Think about it, you can take your *Zinger* almost anywhere, so you don't have to let mobility issues rule your life.

The Zinger folds to a mere 10 inches.



Why take our word for it? Call now, and find out how you can get a *Zinger* of your very own.

Now available in a Joystick model
(Zoomer Chair)



Joystick can be mounted on the right or left side for rider's comfort

Scan with Phone Camera



The Zinger and Zoomer Chairs are personal electric vehicles and are not medical devices nor wheelchairs. They are not intended for medical purposes to provide mobility to persons restricted to a sitting position. They are not covered by Medicare nor Medicaid. © 2023 Journey Health & Lifestyle

enjoying life never gets old™

journey
zinger®
HEALTH & LIFESTYLE™

Call now and receive a utility basket absolutely FREE with your order.

1-888-632-0914

Please mention code 603289 when ordering.



Untangling Power Line

Myths vs Safety

Power lines deliver electricity to homes and businesses and are essential to our modern way of life. We see them everywhere, so we sometimes forget they can be potentially dangerous.

Myths abound when it comes to power line safety. It's crucial to

end power line misconceptions.

Understanding power line safety helps prevent accidents and protect lives. Create a culture of awareness and safety by encouraging everyone to play it safe with electricity.

01

I'm safe as long as I don't touch power lines.

Lines can energize the air around them. If too close, electricity can jump to you, leading to injury/death.

01

02

If birds can sit on power lines, it's safe for humans to touch them, too.

There's no difference in voltage in the distance between a bird's feet, so no circuit is created. Electric shock occurs if a person touches a line while touching the ground.

02

03

Wooden ladders are safe around power lines.

Wood is not a sufficient insulator. Only use nonconductive ladders around power lines and maintain a safe distance.

03

04

It's safe to trim trees near the power lines.

Branches could strike power lines and you at the same time, causing physical harm or death. This should be left to the professionals.

04

05

Power lines are insulated, so they're safe to touch.

Touching a power line, even if it appears insulated, can deliver an electric shock.

05

1920s Style for a 1920s Price

It was a warm summer afternoon and my wife and I were mingling with the best of them. The occasion was a 1920s-themed party, and everyone was dressed to the nines. Parked on the manse's circular driveway was a beautiful classic convertible. It was here that I got the idea for our new 1920s Retrograde Watch.

Never ones to miss an opportunity, we carefully steadied our glasses of bubbly and climbed into the car's long front seat. Among the many opulent features on display was a series of dashboard dials that accentuated the car's lavish aura. One of those dials inspired our 1920s Retrograde Watch, a genuinely unique timepiece that marries timeless style with modern technology.

With its remarkable retrograde hour and minute indicators, sunburst guilloche face and precision movement, this design is truly one of a kind. What does retrograde mean? Instead of displaying the hands rotating on an axis like most watches, the hands sweep in a semicircle, then return to their starting point and begin all over again.

Retrograde watches by the big brands can set you back thousands; one recent offering from a big French fashion house is selling for more than \$150,000! But because we've designed the 1920s Retrograde Watch in-house, we can offer it to you for just \$99!

This watch is so wildly popular with our customers that we're actually concerned about running out; we only have 937 729 left for this ad!



JOIN MORE THAN 1 MILLION SMART PEOPLE WHO LOVE STAUER WATCHES

Watch Specifications:

- Precision movement
- Stainless steel case, caseback and crown
- Retrograde hour and minute indicators
- Water-resistant to 5 ATM
- Brown genuine leather band
- Fits wrists up to 8"

1920s Retrograde Watch

~~\$399~~ \$99* + S&P **Save \$300**

**Special price only for customers using the offer code.*

1-800-333-2045

Your Insider Offer Code: RGW204-01

"An elegant and exciting timepiece that every collector will love."

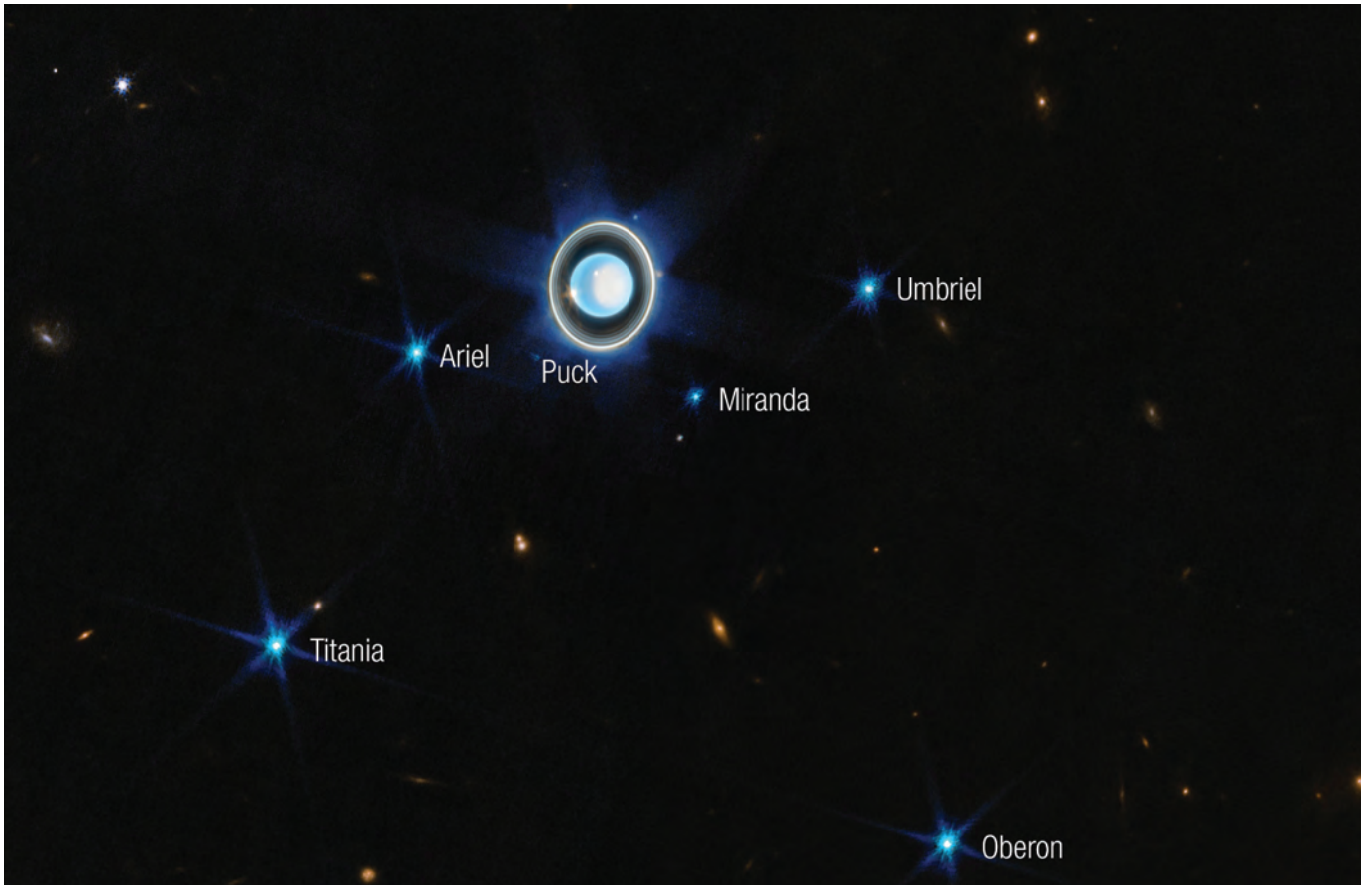
— George Thomas, internationally renowned watch expert

"[A] unique and beautiful timepiece."

— Carlos C., Los Banos, CA

Stauer, 14101 Southcross Drive W., Ste 155, Dept. RGW204-01, Burnsville, MN 55337 www.stauer.com

Stauer® | AFFORD THE EXTRAORDINARY®



Uranus, with its system of thin rings and several of its moons, as imaged by the James Webb Space Telescope on February 6, 2023. COURTESY NASA/ESA/CSA/SPACE TELESCOPE SCIENCE INSTITUTE/JOSEPH DEPASQUALE

Bright Constellations

The planetary show we've been enjoying in the evening sky since the latter part of 2023 still has a few more months to run but loses one of its main performers during February. The ringed planet Saturn is already low in the southwest as darkness falls during the early part of the month and disappears into the twilight by month's end.

Meanwhile, Jupiter is high in the western sky at the end of dusk and sets an hour or so before midnight.

Trailing along about an hour behind Jupiter—and located somewhat to the southwest of the prominent dipper-shaped Pleiades star cluster in Taurus—is the distant planet Uranus. It can be glimpsed with the unaided eye from dark rural sites and be detected with ordinary binoculars from most other locations. Uranus and Jupiter are slowly approaching each other in the nighttime sky and will have a conjunction with each other in late April.

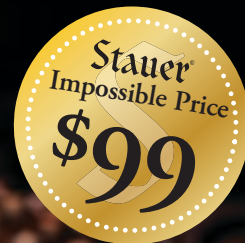
Our morning skies this month are relatively free of planets. Venus has dominated the morning hours for the past few months,

but lately has sunk lower to the horizon. At the beginning of February, it rises around the beginning of dawn. As Venus continues its descent, Mars is going in the opposite direction. Mars begins a slow climb into the morning sky, and on the morning of Thursday, February 22, the two worlds will pass by each other in a rather close conjunction. This event, unfortunately, will take place deep in twilight and will not be especially easy to see.

Several bright stars and prominent constellations inhabit our evening skies this time of year. Chief among these is the constellation Orion—representing the famous hunter from Greek mythology. Its two brightest stars are Rigel, marking the hunter's western knee; and Betelgeuse, marking the hunter's eastern shoulder. Betelgeuse forms a nearly equilateral triangle, often dubbed the winter triangle, with two other bright stars: Procyon to its east and Sirius—the brightest star in the entire nighttime sky—to its southeast. Sirius is the primary star of the constellation Canis Major—the “Big Dog”—and accordingly is often nicknamed the “Dog Star.” 🐕

See the Forest Through the Trees

Mighty Conifer Knife at an Impossible Price!



What Stauer Clients Are Saying About Our Knives



"Outstanding knife of high quality and a great price. I now have a number of your great cutlery in my growing collection!"

— Robert F., Richardson, TX

We know you. You're not interested in everyday, run-of-the-mill, common cutlery. You want something with a story, a unique feature that you can brag about. We've got just the thing for you. Our *Mighty Conifer Knife* is a unique tool with a Damascus steel blade and a handle crafted from an enhanced and stabilized natural pinecone. While our competitors are charging hundreds for similar knives, we're offering the Mighty Conifer for **JUST \$99!** That's what we call our Stauer Impossible Price.

JOIN MORE THAN 389,000 SHARP PEOPLE WHO COLLECT STAUER KNIVES

Each pinecone — and therefore, each knife — has its own unique characteristics. And the back of the handle features hand tooling, a further demonstration of each piece's individual nature.

The blade is nothing to scoff at either. Constructed of Damascus steel, a modern reworking of the legendary steel forged by ancient swordsmiths, this nearly 5-inch blade features 256 layers of steel that have been folded on top of each other to increase its durability. Our competitors are charging hundreds for boring, run-of-the-mill knives with no features worth bragging about. We're asking **JUST \$99** for a knife unlike any you've seen before!

With its full-tang construction and high-quality genuine leather sheath, the Mighty Conifer Knife is the perfect blade for the

person who wants to stand out. **CALL NOW!** If you're one of the first 700 587 callers for this ad, we'll throw in a pair of *Stauer 8x21 Compact Binoculars* — a \$99 value — **ABSOLUTELY FREE!** Satisfaction guaranteed or your money back!

Knife Specifications:

- 9 1/2" overall length. Full-tang construction
- Damascus steel blade and natural pinecone handle
- Genuine leather sheath

Mighty Conifer Knife

~~\$299~~ \$99* + S&P **Save \$200**

***You must use Insider Offer Code: MCK158-01 to get this price.**

California residents please call regarding Proposition 65 regulations before purchasing this product.

1-800-333-2045

Your Insider Offer Code: **MCK158-01**

EXCLUSIVE FREE

Stauer 8x21 Compact Binoculars a \$99 value with your purchase of the Mighty Conifer Knife



Stauer, 14101 Southcross Drive W., Ste 155, Dept. MCK158-01, Burnsville, MN 55337 www.stauer.com

Stauer® | AFFORD THE EXTRAORDINARY®

The



Mysterious Cloud

And Other Internet Storage Enigmas

By Jen Calhoun

For years now people have been talking about the cloud. “That document is in the cloud,” they’ll say, or, “I saved those pictures in the cloud.” Meanwhile, nobody ever bothers to explain it.

Let’s end that vague talk once and for all. It’s time to get a grip on this shadowy figure known as the cloud.

What Is the Cloud?

Simply put, the cloud is the concept of using someone else’s computer server to store, host or process data. The cloud is a service offered by all kinds of companies. If you use a computer, smartphone, smart

TV or any other kind of electronic device that connects to the internet, chances are you’ve used some form of cloud service.

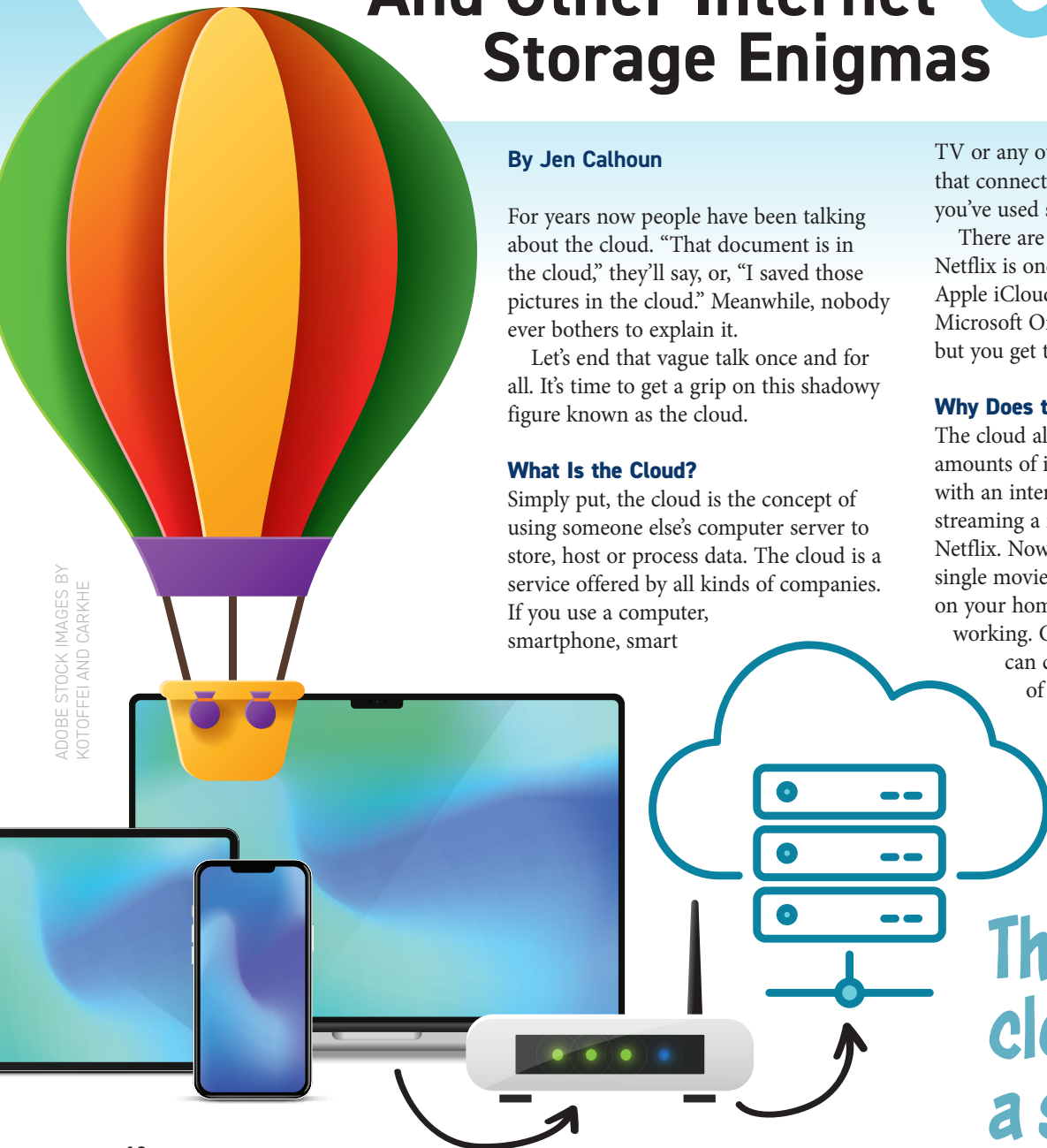
There are all kinds of cloud services. Netflix is one. So are Google Drive, Apple iCloud, Yahoo Mail, Dropbox and Microsoft OneDrive. There are many more, but you get the drift.

Why Does the Cloud Matter?

The cloud allows us to access large amounts of information on any device with an internet connection. Think about streaming a movie or episodes of a show on Netflix. Now, imagine trying to store every single movie or show available on Netflix on your home computer. It would stop working. Cloud technology is how we can choose from tens of thousands of movies to watch at the touch of our remotes.

Cloud services are how your child can write a paper on their laptop and you can edit it from an entirely different place, whether it’s your office

The cloud is a service.



ADOBE STOCK IMAGES BY KOTOFFEL AND CARKHE



The cloud.

NOT
the cloud.

or another city, state or country. The cloud's remote servers handle much of the computing and the storage, so you don't have to buy a Pentagon-worthy computer.

The cloud also allows us to store and back up our own data. For instance, you can store and view documents, videos and your photo collection on a cloud service without overloading your computer or smartphone's internal storage.

If you use cloud services, anything you save is backed up and accessible from anywhere, provided you remember usernames and passwords. A fire, network outage or a power surge might destroy your devices, but your information can still be secure in the cloud if you backed it up.

Where Is the Cloud?

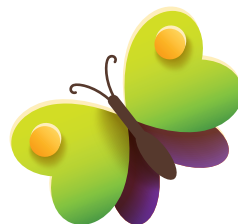
The cloud is not actually in the clouds. Cloud services are right here on Earth, stored inside computer servers that are most likely sitting inside server farms—giant, temperature-controlled facilities full of computer servers that store and transmit information. Next time you picture the

cloud, think of rows of black boxes with blinking lights.

Not-so Silver Linings

There can be downsides to storing and accessing information remotely, however. For one thing, many cloud services cost money. Some devices, such as iPhones, offer free cloud storage up to a certain amount of data. After that, you'll need a subscription. Business cloud services often charge per gigabyte of storage.

Also, cloud services only work with internet access. Without the internet, there is no connecting to the cloud. And despite serious security measures set in place by cloud service companies, hackers can still find ways to get in. Other calamities that could disrupt your cloud services are natural disasters and other disruptions that cause network outages. 📧



Avoid QR Mischief

QR codes—short for quick response codes—pop up frequently. TV ads, restaurant menus and many more businesses and services rely on these little squares of blocky lines to link a smartphone user to handy information, a download or as a way to digitally send money to someone.

The FBI, however, has warned that cybercriminals may tamper with the codes. The FBI offers a few tips so you can take advantage of QR codes while staying safe and secure:

- ▶ After scanning a QR code, check the URL to make sure it is the site you want. A malicious domain name may be similar to the intended URL but with typos or a misplaced letter.
- ▶ Be cautious when entering login, personal or financial information.
- ▶ If scanning a physical QR code, ensure the code shows no signs of tampering, such as a sticker placed over the original.
- ▶ Do not download an app from a QR code.
- ▶ If you receive an email asking you to complete a payment through a QR code, call the requesting company to verify. Look up the company's number on a trusted site—don't use a number from the email.
- ▶ Do not download a QR code scanner app—the built-in phone camera is a safer option.
- ▶ If you get a QR code you believe to be from someone you know, contact them through a known number or address to verify.
- ▶ Avoid making payments through a site navigated to from a QR code. Instead, manually enter a known and trusted URL to complete the payment.



ADVENTURE AWAITS

On the Road in *Abiquiú*

Visit Abiquiú to see a range of scenic vistas that have inspired many works of art. ADOBE STOCK PHOTO BY JO

Follow in the footsteps of famed artist Georgia O'Keeffe

Story and photos by Lonnie Tucker

Deep in the heart of Rio Arriba County along the Rio Chama River, about 53

miles north of Santa Fe, is the small town of Abiquiú, a town associated with Georgia O'Keeffe, the mother of American modernism.

The town was established in 1742 by Tewa Pueblo families under the leadership of Roman Catholic priest Francisco Delgado. In 1830, Abiquiú was recognized as the starting point for the Old Spanish Trail. Abiquiú gained worldwide notoriety

in 1949, when Georgia became a resident.

Art lovers and historians can visit the Georgia O'Keeffe Welcome Center annually and see special exhibitions. Guests can buy tickets to tour the O'Keeffe Home and Studio from March through November. This National Historic Landmark offers individuals a chance to visit and see the garden where Georgia drew inspiration and the studio where she created some of her most iconic works of art. The 2024 tour season begins March 7.

When visiting Abiquiú, there is never a shortage of things to do and see. Whether hiking and exploring the red and yellow cliffs of the Piedra Lumbre at Ghost



The Georgia O'Keeffe Welcome Center is home to many exhibitions of Georgia's artwork.

Enter to Win

The New Mexico Rural Electric Cooperatives is providing one winner with a pair of tickets to the O'Keeffe Home and Studio in Abiquiú, and one winner with a pair of tickets to the Georgia O'Keeffe Museum in Santa Fe.

On February 1, we will post this feature on NMREC's Facebook, Instagram, and X/Twitter social media platforms. To enter the contest, "like" the post and leave a comment on the article. Two winners will be selected on February 29 and announced on social media. Good luck!

Ranch, enjoying the pristine blue waters of Abiquiu Lake or rafting in the Rio Chama River, Abiquiu is close to several outdoor recreational areas and destinations.

Abiquiu is home to many restaurants. Café Abiquiu & La Terraza is next to the Georgia O’Keeffe Welcome Center inside Abiquiu Inn. Chef Ray Melton oversees a menu rivaling any restaurant in Albuquerque, Taos and Santa Fe, with a variety of dining options for everyone.

“Our guests love the Copper Canyon,” says Café Abiquiu Food and Beverage Manager Raelynn LaRue. “It is our amazing version of an eggs Benedict, featuring two poached eggs sitting on polenta smothered with creamy red chile sauce.”

A popular lunch is the trout tacos with blue corn taco shells made in house. The shrimp and salmon combo is a hit at dinner.

“My favorite item on our menu is the enchilada/chile relleno combo, with the local ground lamb from El Rito, smothered in delicious New Mexico red and green chile,” Raelynn says.

Café Abiquiu offers a casual dining experience where customers can dine indoors among the walls highlighted with paintings by local artists Michelle Chrisman, Barbara Clark and Lori Faye Book and photography by Kirt Kempter. Customers can also dine outside on the patio featuring a large, wood-burning fireplace.

Need a place to stay while you are in the area? Look no further than Abiquiu Inn, next to the Georgia O’Keeffe Welcome Center. Designed by the world-renowned architect Hasan Fathy, the facility was built in 1982. Abiquiu Inn is a gateway for exploring some of the most pristine panoramas in the nation.

Abiquiu Inn offers 30 casitas and two houses finished in the regional Southwestern design. The lodging experience at Abiquiu Inn features a local art gallery and an on-site restaurant. The staff goes out of its way to ensure guests enjoy a first-class experience.

The Shop at Abiquiu Inn offers a wide selection of books highlighting the region, local pottery and lavender products,



ABOVE: Café Abiquiu has the work of many local artists on its walls. TOP: The Abiquiu Inn has a range of casitas and houses for guests to stay in.

seasonal apparel and fashion accessories. Georgia O’Keeffe fans find a selection of books, cards, prints and gift items to enhance their visit and memories. 

Café Abiquiu is open every day and serves breakfast from 7 to 11 a.m., with lunch and

dinner from 11 a.m. to 8 p.m. Call 505-685-4378 for information, reservations and to place carry-out orders. Be sure to tell them you read about Café Abiquiu in enchantment!

Abiquiu Inn is at 21120 Hwy 84, Abiquiu, NM 87510. Call 505-685-4378 for information and reservations.

Electric Co-ops Prepare for Extreme Weather

By Scott Flood

From the earliest days of electricity, weather has presented the biggest challenges to electric grids' reliability and safety. Severe thunderstorms, tornadoes, hurricanes, heat waves, heavy snowfalls, flooding and wind events have long tested power lines and electric utility crews across the country.

If you've thought storm events seem more frequent and intense these days, you're not wrong. The National Oceanic and Atmospheric Administration, which tracks weather and climate disasters causing more than \$1 billion in damage, reported an annual average of 18 such events between 2018 and 2022. That compares to an average of just 8.1 major disasters per year from 1980 to 2017—even when adjusting for inflation.

While scientists and policymakers debate the causes of our wild weather, electric utilities are diligently working

to prepare for it. From coast to coast, utilities take steps to harden the vital infrastructure that delivers electricity to our members' homes, farms and other businesses. That includes upgrading equipment and connections to the nation's electric power grid to better withstand disaster-level events. Additional strategies are intended to prevent damage from happening in the first place.

For example, you may have noticed an emphasis on tree trimming and other vegetation management. Keeping trees and branches a safe distance from power lines reduces the potential for weather-related outages. It's sad to see favorite trees trimmed, but many of the outages handled every year happen when trees tangle with power lines.

As drought conditions contribute to wildfires in places where they've previously been rare, planning is needed for the possibility of similar events in unexpected



locations. Keeping vegetation away from power lines and equipment helps prevent wildfires and limit their spread.

Hardening the infrastructure includes a long list of other strategies—such as a coordinated schedule for assessing infrastructure. If one power pole is damaged or otherwise weakened, strong winds might bring it down and leave a big area in the dark. That's why it is important to keep an eye on all the poles and install more durable replacements when necessary.

When crews aren't fixing problems, they're working just as hard to prevent them from happening. Those poles and the wires connecting them are frequent targets for lightning, so local power grids are protected by installing lightning arrestors to safely divert surges caused by lightning strikes.

Severe weather events have always presented the biggest challenges to power reliability and safety. Electric co-ops take proactive steps to prepare lines and equipment for severe weather damage. PHOTO BY KATIE MORRIS, LAMAR ELECTRIC COOPERATIVE





ABOVE: Extreme storms have long tested power lines and crews across the country. PHOTO BY ADAM ELROD, MIDDLE TENNESSEE ELECTRIC COOPERATIVE **RIGHT: Keeping trees and branches a safe distance from power lines reduces the potential for weather-related outages.** PHOTO BY LAURA RIBAS, LEWIS TREE TRIMMING SERVICES




Investments are also being made into sophisticated management systems—what some call the smart grid—capable of drawing attention to potential issues before they grow into problems. Paired with innovative technology such as reclosers, which shut off electric power when trouble occurs, these systems are engineered to keep your power flowing even in the toughest weather conditions—or when wildlife tries to make a home in electric equipment. Protecting substations and other important outdoor equipment from severe weather events has also been a focus.

Power outages are just one way extreme weather can affect your energy costs. Weather extremes in one part of the country can significantly impact energy

availability and costs elsewhere. As winter temperatures drop in many areas, the demand for heating drives up market energy prices, and cooperatives may have to pass those higher costs along to members.

You and your neighbors can help limit the impact of those higher costs by shifting your energy use away from peak times. For example, instead of running the dishwasher in the early evening when

energy costs are highest, set it to run while everyone's asleep and rates are lower. The more members help reduce energy use at peak times, the less everyone will have to pay for energy.

Implementing steps to prevent damage from potential weather disasters is one more example of your utility's dedication to ensuring your power is always ready when you need it most. 

Efficiency Tips for Manufactured Homes

By Miranda Boutelle

Q: I live in a manufactured home. How can I keep the inside temperature more comfortable and save on energy bills?

A: There are several tasks you can complete to improve comfort and use less energy in your manufactured home. I started my career in energy efficiency as a weatherization technician in Wisconsin. In this role, I helped people in manufactured homes by sealing ducts, adding insulation and installing new windows, showerheads, faucet aerators and lightbulbs.

More than 22 million Americans live in manufactured homes, according to the National Association of State Energy Officials. Manufactured homes represent 15% of housing in rural areas and 3% in urban areas.

Knowing how manufactured homes are built helps us understand where we can seal in savings around the house. These homes are built in factories, transported and then set up on-site. Construction in a factory reduces costs, making manufactured homes an affordable option. That lower price point can come, in part, from the use of less expensive equipment and fewer materials, such as lower-efficiency heating equipment or less insulation.

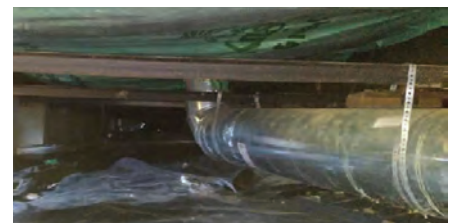
If you are considering buying a manufactured home, Energy Star-certified manufactured homes are 30% more energy efficient than standard models, with options that increase the home's energy efficiency.

If you already live in one, you likely know manufactured homes are built in sections. One section is a singlewide home, two are combined to make a doublewide home and three make a triplewide home.

In my experience, the biggest issues are in the duct systems, which deliver heating and cooling throughout the homes. The ductwork is typically located in the cavity between the floor and the transport barrier, which protects the underside of the manufactured home while it is transported from the factory to the site. Typically, one long duct runs the length of each section of the home, with the



ABOVE: Manufactured homes are an important segment of housing, providing affordable living options particularly in rural areas. PHOTO BY BRIAN WANGENHEIM/UNSPASH **RIGHT:** Damaged or disconnected ducts allow the air you pay for to escape under the home. PHOTO COURTESY OF EFFICIENCY SERVICES GROUP



registers or vents cut into it.

The first step to improving efficiency is making sure all registers are accessible, open and not covered by furniture, rugs, dog beds or anything else.

Next, check your ductwork by removing the registers and looking inside. Anything inside the duct will restrict airflow, so check that it is free and clear. Use a mirror and flashlight to look into the duct or take a picture by sticking a camera or phone inside and snapping some shots with flash in each direction. I've pulled all kinds of things out of ducts over the years, from garbage to toys to shoes.


If you have a doublewide or triplewide, you will likely have a crossover duct, which joins the ducts in each section. The crossover duct is typically a large flexible duct with an inner liner, insulation and an outer cover to protect the insulation.

Damaged or disconnected crossover ducts allow the air you pay for to heat and cool your space to escape under the home. Often, damage is done by animals chewing or scratching to get inside the warm area. An inspection of the crossover duct requires crawling under the home. That's a dirty job and often a tight spot, so you might choose to hire a professional.

Another place to check is the joint

connecting the sections of a doublewide or triplewide together. This is often covered by trim when the home is placed. You can caulk around the trim or remove it and caulk underneath to reduce air leakage.

Weatherstripping doors and windows to make sure they seal tightly will also reduce drafts and save energy. Some homes can benefit from additional insulation in the attic or under the floor. Those projects typically require specialized equipment or help from a professional.

Weatherization assistance programs, like the ones offered by the company I worked for in Wisconsin, provide discounted and no-cost energy-saving upgrades. Check with your county or electric utility for more information. 



Miranda Boutelle has more than 20 years of experience helping people save energy. She has worked on energy-efficiency projects from the Midwest to the West Coast. Today, Miranda is chief operating officer at Efficiency Services Group in Oregon, a cooperatively owned energy-efficiency company.

This content was originally created by Efficiency Services Group LLC under contract with NRECA. NRECA retains ownership of this content. NRECA does not endorse Efficiency Services Group, its views herein expressed, nor any products or services it offers.



WILLIAMS WINDMILL INC.

THE TRUSTED CHOICE SINCE 1976!

We stock the area's largest supply of all things pertaining to water!

- Solar well systems
- Full septic systems
- Plumbing fittings
- Poly pipe
- Water storage tanks
- PVC pipe
- Pressure tanks
- Fencing supplies

We are proud to serve our local community and provide cost-effective solutions for any water or well project. On behalf of everyone at Williams Windmill, we want to thank all our customers for their patronage and look forward to serving the Southwest for many more years to come!

Exit 156 • Frontage Rd • Lemitar NM
(575) 835-1630 williamswindmill.com



J & J AUCTIONEERS
www.jandjauction.com
575-485-2508

February Regional Online Auction

February 17th, 2024 @ 9am
Online Auction
Items located throughout New Mexico & Colorado

FEATURING:
HEAVY EQUIPMENT, FARM EQUIPMENT, TRUCKS, TRAILERS, ATVS, , ATTACHMENTS, TIRES, AND MUCH MORE!



Contact one of our salesman to get your items consigned

JOE 575-447-2508
JOHN 505-617-0799
DAVE 505-652-8832
ROLAND 505-617-5345

Check our website for more info and upcoming auctions!!

Inspirational historical fiction from New Mexico author Charlene Dietz.
"A robust imagining of the life of a largely unsung hero." - Kirkus Reviews



The Spinster, the Rebel, and the Governor
CHARLENE BELL DIETZ

Murderous rebels and bigoted gentlemen can't prevent spinster Lady Margaret Brent from wielding her power to defend Maryland settlers from plunder and obliteration.

9781951122805/ \$17.95
apbooks.net/srg.html




Rik Thompson
Realtor
Farm & Ranch Specialist
505-350-3598
rik@republicranches.com

As a Cattleman, I Understand the Farm and Ranch Business

Republic Ranches, LLC
210-416-2737

Follow us on Facebook!

www.facebook.com/nmrecoops

Edward Jones® Member SIPC



Candace Muncy
Financial Advisor
1200 New York Avenue
Alamogordo, NM 88310
575-434-5850

MKT-5894N-A

edwardjones.com

Homemade and Hearty

Nothing says loving quite like homemade, warm and cozy food. This month, we celebrate those around us we love with treats that warm not only the tummy but the heart.

We start with our easy slow cooker chicken and green beans, which is a busy cook's dream. It combines vegetables and protein in one recipe and can be ready to eat when coming home after a busy day.

Five (yes, five!) cheese roasted veggie soup brings all the comfort of warm deliciousness to the table and is loved by all ages. Eating vegetables never tasted so good! And why not involve the children in making mug cakes for their family and friends? Red velvet mug cakes are simple and require no stove time, making it a safe and successful recipe for children to manage. Decorating the mugs adds a special touch. 'Tis the season for showing love to those around us. Happy cooking!



Sue Hutchison was born and raised a block from the freeway in Southern California. She had an early start with industrial, large-scale cooking before age 20. She's always been both a beach bum and at home in the kitchen, where she enjoys making new creations.

Slow Cooker Chicken and Green Beans

- | | |
|---------------------------------------------------|-------------------------------------|
| 2 large boneless, skinless chicken breasts, cubed | 2 packages dry Italian dressing mix |
| 3 medium-sized red potatoes, cubed | 1 12-ounce bag frozen green beans |
| 1 yellow onion, diced | |

Prepare your slow cooker with a light coating of cooking spray.

Place chicken, potatoes and onion in the slow cooker. Sprinkle Italian dressing over the chicken. Add green beans and cover.

Cook for four to six hours on low.

Serve warm with crackers, bread or grated cheese.



Five Cheese Roasted Veggie Soup

- | | |
|-----------------------------------------|----------------------------------------------------------------------------|
| 1 20-ounce bag stir fry veggies, frozen | 2 empty soup cans of milk |
| Olive oil cooking spray | 4 ounces cubed easy melt (Velveeta) cheese |
| 1 teaspoon black pepper | 1 cup grated sharp cheddar cheese |
| ½ teaspoon salt | 2 ounces cream cheese |
| 2 teaspoons dried oregano | Grated Parmesan cheese and prepared cheese and garlic croutons for garnish |
| 1 10-ounce can broccoli cheese soup | |
| 1 empty soup can water | |

Preheat oven to 425 F.

In a rimmed baking sheet, place frozen veggies sprayed liberally with olive oil cooking spray. Sprinkle pepper, salt and oregano on top. Place in the oven and roast for 25 to 30 minutes or until veggies are slightly charred.

In a large soup kettle, whisk together the broccoli-cheese soup, one can of water and two cans of milk. Whisk until smooth and cook on medium-low heat. Add cubed easy-melt cheese, sharp cheddar and cream cheese. Continue whisking until heated and incorporated.

After veggies are charred, remove from the oven and scoop into cheese mixture. Stir.

To serve, ladle soup into individual bowls, and sprinkle Parmesan cheese and croutons on top.



Red Velvet Mug Cakes

- | | |
|-------------------------------------|---------------------------------------------------------------|
| 6 tablespoons flour | ½ teaspoon vanilla extract |
| 2 tablespoons sugar | ⅓ cup milk |
| 1 teaspoon unsweetened baking cocoa | 2 drops red food coloring (more if deep red color is desired) |
| ¼ teaspoon baking powder | 3 tablespoons powdered sugar |
| ¼ teaspoon salt | 2 ounces cream cheese, softened |
| 2 tablespoons butter, melted | |

In a medium-sized microwaveable mug, combine flour, sugar, cocoa, baking powder and salt.

Add butter, vanilla, milk and food coloring. Stir.

In a small bowl, mix powdered sugar and cream cheese with a fork until smooth. Make a well in the cake mixture, drop powdered sugar mixture into the well, and fold the cake mix over.

Cook in the microwave on high for 1 to 1½ minutes or until a toothpick comes out clean when inserted.

After the mug cake has cooled, decorate as desired with frosting, sprinkles, whipped cream, etc.



LAUNCHING SOON

New advertisement pricing and format on their way

By Lonnie Tucker,
New Mexico Rural Electric Cooperatives

The Market Place will see some more exciting changes starting with the April 2024 edition of enchantment magazine. The changes include new classified advertisement pricing, ad dimensions and digital ad platforms. This new format will provide greater value as the classifieds will be published using several new digital platforms to reach an expanded audience.

The Market Place was last redesigned in 2013, and the classified ad pricing has not changed in the 10 years since. Starting April 1, we will provide two classified advertising options that will be published and run for one month. The first option is the 1-column inch (2.27 inches x 1 inch) ad for \$100, and the second option is the 2-column inch (2.27 inches x 2 inches) ad for \$200 with an optional color background at no charge to increase visibility.

2024 FORD F-150 PLATINUM

Brand new. 150 miles. Super Crew Cab. Atlas Blue. 5.0L V8 Engine With 395-HP. Electronic 10-Speed Automatic Trans. 701A Equip Group Features. \$65,000 Firm. Call XXX-XXX-XXXX.

2024 FORD F-150 PLATINUM

Brand new. 150 miles. Super Crew Cab. Atlas Blue. 5.0L V8 Engine With 395-HP. Electronic 10-Speed Automatic Trans. Sport Mode, 20-Inch Aluminum Wheels. Multi-Contour Leather Front Bucket Heated And Ventilated Seats, Heated Rear Seats, Dual-Climate Control, SiriusXM® Radio Navigation, 8-Inch Productivity Touch Screen. 701A Equipment Group Features. \$65,000 Firm. Call XXX-XXX-XXXX.

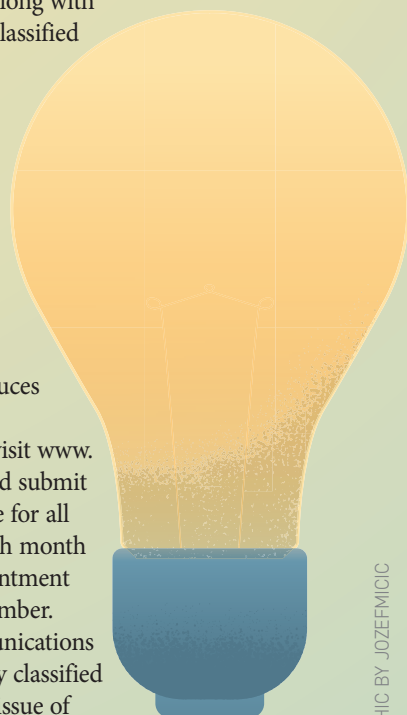
The new price format is structured to provide greater marketing impact and value. Classifieds will now appear in the following four media instead of just one: A new enchantment digital magazine and enchantment website will launch March 1, along with a revised NMREC website featuring a new classified page. These digital aspects will dramatically increase the number of classified views, and our printed monthly enchantment magazine will continue to deliver classified ads to more than 434,700 electric cooperative household members in New Mexico.

The new enchantment classified prices starting April 1 are significantly lower than printing the same ad for 28 days with the leading newspapers in Albuquerque, Las Cruces and Santa Fe.

To place a classified ad in enchantment, visit www.enchantment.coop/classifieds and fill out and submit the classified submission form. The deadline for all classified ads and payments is the 7th of each month except for May and November, as the enchantment magazine is not produced in June and December.

Questions? Contact the NMREC Communications Department at 505-819-7719 if you have any classified advertising questions. Enjoy your February issue of the enchantment magazine!

The 1-column inch and 2-column inch ads will be the advertising formats in the enchantment magazine beginning April 1.



ADOBE STOCK GRAPHIC BY JOZEFMVIC

THE MARKET PLACE

Animals

NOT ALL WATER TANKS ARE CREATED EQUAL! Are quality, value and longevity important to you? Buy high specific gravity, heavyweight, long warranty, superior black NRCS tanks. Lowest prices only provide minimum standards, lower weights and shorter warranties. Find out more! 575-430-1010.

NEW MEXICO DRINKING WATER STORAGE TANKS, heavy-duty black poly. Fittings customized to your needs. NRCS and EQUIP approved. High specific gravity, heavyweight, long warranty, algae resistant, black NRCS water tanks. Call 800-603-8272 or 575-682-2308.

SADDLES AND TACK. Everything for the horse. Western & English tack bought and sold. Rancho Elisa Stables LLC, 500 Route 66 East, Moriarty, NM 87035. Call 505-832-5113 or email ranchoelisastablesfr@swcp.com

LET US MARKET YOUR LIVESTOCK. Live auction every Wednesday at 11 am. View online at dvauction.com, country bid or live auction. If you've got 'em, we'll sell 'em. Call 575-374-2505. fivestateslivestockauction@gmail.com

BLACK ANGUS BULLS - thick easy fleshing, low maintenance bulls. Range raised at high elevation. Trich and fertility tested. Low birth weight and Herd bulls available. 18-month old bulls available now starting at \$2,600. Yearling bulls available in the spring starting at \$2,200. Call Bobby Salvo at 575-642-0962 for more information.

REGISTERED ANGUS BULLS, sons of proven AI sires, high altitude - PAP tested at 7600', many suitable for use on heifers. Cimarron Angus, Maxwell 575-375-2972 or cell 575-643-5294 or bgoebel@bacavalley.com

BLACK/WHITE, REGISTERED BORDER COLLIE PUPPIES. Both parents work cattle and sheep. Puppies have been wormed and vaccinated. Ready to go early February. Females 500. Males 400. Call 575-375-2972 Northeastern NM.

THE CACTUS COMPANY TURQUOISE CORRAL HORSE HOTEL - located in Quemado, NM. Overnight stabling in 16 x 16 covered pens. Call 505-629-3369 (cell) or 575-773-4753 (home) for more information.

Business

SUNSET SADDLES OFFERS CUSTOM LEATHERWORK; ie: saddles, chaps, chinks, holsters, belts, etc. Also saddle and tack repair. Located in La Luz, NM. Call 575-257-8874 or email: sunsetsaddles@yahoo.com

Equipment

GREAT OFFER ON SOLAR SUBMERSIBLE SHALLOW/DEEP WELL PUMPS! NRCS approved with two-year warranty on selected pumps with affordable, easy installation! For a custom quote, call 505-429-3093 or email us at solarwellpumpsonline@gmail.com, 24/7 service. Order online at our website: www.solarwellpumpsonline.com

DRINKING WATER STORAGE TANKS, heavy-duty black poly, proven algae resistant. 125 to 11,000 gallons, NRCS and EQUIP approved. Please give us a chance to serve you! MasterCard or Visa accepted. Call 575-682-2308 or 1-800-603-8272.

OVERHEAD FEED BINS. 1 to 4 compartment, 12 to 48 tons. Any size free standing cattle guards, no footing needed. Dealer for T & S Feeders. Emery Welding, Clayton, New Mexico. Call 575-374-2320 or 575-207-7402. Email: eweld98@yahoo.com

Great Finds

BUYING OLD STUFF: Gas pumps and parts 1960's or earlier, advertising signs, neon clocks, old car parts in original boxes, motor oil cans, license plate collections, Route 66 items, old metal road signs, odd and weird stuff. Fair prices paid. Have pickup, will travel. Gas Guy in Embudo, 505-852-2995.

RAILROAD ITEMS WANTED: Kerosene lanterns, brass locks, keys, badges, uniforms, bells, whistles, and pre-1950 employee timetables. Always seeking items from any early New Mexico railroad, especially D&RG, C&S, EP&NE, EP&SW, AT&SF, SP or Rock Island. Call Randy Dunson at 575-760-3341 or 575-356-6919.

WANTED: NEW MEXICO MOTORCYCLE LICENSE PLATES 1912-1970. Paying \$100-\$500 each. Also buying some NM car plates 1900-1923. Visit NMplates.com for history and 5,000 photographs of NM plates. Bill Johnston, Box 1, Organ, NM 88052-0001. Email: Bill@NMplates.com or telephone 575-382-7804.

HEADSTONES (I.E. CEMETERY MONUMENTS) is our business. Over 1,000 designs. An eternal memory of a loved one. **TAOS MOUNTAIN HERITAGE.** Call 575-770-2507 or Email: taos_mt_heritage@msn.com Website: www.taosmountainheritage.com

OLD SCHOOL SIGN PAINTER, hand lettered signage, windows, walls, vehicles, wood, metal or banners. For more information, call A. Sanchez at 505-498-7743.

BUSINESS OPPORTUNITY: Massive DVD collection like new (many still in original wrap). 3,000 plus movies. Categories include: Marvel/Superheroes, Horror/scary (Stephen King collection). Comedy, Drama, Disney/children, Variety of TV series. Asking \$2,000 (make offer) for entire collection. Call 505-363-2750.

Real Estate

DATIL, 0000 2 CRISWELL ROAD, 40 ACRE TRACT FOR \$24,000. Off grid living or hunting. Vacant land. Big Mesa Realty, 575-456-2000. Paul Stout, broker, NMREL 17843, 575-760-5461. www.bigmesarealty.com

PIE TOWN, SOUTH OF WILD HORSE SUBDIVISION near goat ranch road. Two tracts (east). 20 acres for \$12,000 and 40 acres (north) at \$24,000. Off grid living or hunting, Vacant land. Big Mesa Realty, 575-456-2000. Paul Stout, broker, NMREL 17843, 575-760-5461. www.bigmesarealty.com

CANADIAN RIVER - WEST OF UTE LAKE, QUAY ROAD AI. Six 40 acre (more or less) lots with lake and mesa land views. Call for appointment to show and pricing. Big Mesa Realty, 575-456-2000. Paul Stout, broker, NMREL 17843, 575-760-5461. www.bigmesarealty.com

TUCUMCARI, 1120 S. SARATOGA, just over 1 acre fronting US 54 (Mountain Road). City water nearby. \$20,000. Big Mesa Realty, 575-456-2000, Paul Stout, broker, NMREL 17843, 575-760-5461. www.bigmesarealty.com

SANTA ROSA, 0000 WILL ROGERS DRIVE, Just over 26 acres close to I-40 and old Route 66. Commercial potential. \$399,000. Big Mesa Realty, 575-456-2000. Paul Stout, broker, NMREL 17843, 575-760-5461. www.bigmesarealty.com

SAN MARCIAL, 27 WINCHESTER ROAD, Willow Springs Ranch Subdivision, Just over 702 acres in the foothills of the Chupadera Mountains. 3bd/2ba southwestern style home. Beautiful mountain views and sunsets. Close to I-25. \$1,249,000. Big Mesa Realty, 575-456-2000, Paul Stout, broker, NMREL 17843, 575-760-5461. www.bigmesarealty.com

MILAGRO, 0000 PECOS SPUR, PORTRILLO CREEK RANCH SUBDIVISION, 164 acres. Wide open space for livestock and/or home site. Close to I-40. \$84,000. Big Mesa Realty, 575-456-2000. Paul Stout, broker, NMREL 17843, 575-760-5461. www.bigmesarealty.com

SANTA ROSA, 1070 BAR Y ROAD, HOLLYWOOD RANCH SUBDIVISION. Three parcels totaling just over 41 acres. Perimeter fencing and road. Water and electricity. Close to Santa Rosa. \$125,000. Big Mesa Realty, 575-456-2000, Paul Stout, broker, NMREL 17843, 575-760-5461. www.bigmesarealty.com

CONCHAS, 631 CONCHAS DRIVE, 3bd/2ba home with detached garage and 30 x 40 boat storage. All electric. \$180,000. Big Mesa Realty, 575-456-2000, Paul Stout, broker, NMREL 17843, 575-760-5461. www.bigmesarealty.com

THINKING OF BUYING OR SELLING IN DEMING?

Call Heather Wood at Lamplight Realty, LLC 575-936-4100 or cell 575-494-6331, e-mail heather@lamplightrealty.com or visit the website at www.lamplightrealty.com

GLADSTONE, 4386 SPRINGER HIGHWAY (US 56-412), PRICE REDUCED, 3bd/2ba home with barn and two livestock sheds/lean-tos. Electric well and solar livestock well. \$260,000. Big Mesa Realty, 575-456-2000, Paul Stout, broker, NMREL 17843, 575-760-5461. www.bigmesarealty.com

TUCUMCARI, 10445 STATE ROAD 104, Two parcels totaling just over 10.5 acres. Great views of Tucumcari Mountain and surrounding mesa lands atop hill of Pajarito Creek. \$60,000. Big Mesa Realty, 575-456-2000, Paul Stout, broker, NMREL 17843, 575-760-5461. www.bigmesarealty.com

CURRY, ROOSEVELT AND QUAY COUNTIES, in Clovis, Portales and Tucumcari, or in the country, we want your farm, ranch and residential properties to list and sell. Big Mesa Realty, 575-456-2000, Paul Stout, broker, NMREL 17843, 575-760-5461. www.bigmesarealty.com

CLOVIS, 809 S. PRINCE, PRICE REDUCED. Vacant land just under 5 acres south of the intersection of Brady and Prince streets. Commercial potential. \$135,000. Big Mesa Realty, 575-456-2000, Paul Stout, broker, NMREL 17843, 575-760-5461. www.bigmesarealty.com

MOUNTAINAIR, 0000 CLIFFORD TRAIL ROAD (aka Torrance County Road BO22), Just over 132 acres north of Mountainair with views of the Manzano mountains. One hour to Albuquerque. \$105,000. Big Mesa Realty, 575-456-2000. Paul Stout, broker, NMREL 17843, 575-760-5461. www.bigmesarealty.com

TUCUMCARI, 0000 QUAY ROAD 63.4, Tu-Cam Subdivision. Two one acre lots to sell together for \$10,000. Close to Tucumcari Boulevard. Big Mesa Realty, 575-456-2000. Paul Stout, broker, NMREL 17843, 575-760-5461. www.bigmesarealty.com

TEXICO, 2436 STATE ROAD 108, Two story home on just over 7 acres. 3 car detached garage and additional storage. \$199,500. Big Mesa Realty, 575-456-2000. Paul Stout, broker, NMREL 17843, 575-760-5461. www.bigmesarealty.com

SOUTH OF ALAMOGORDO, NM - two 20 acre parcels south of Dog Canyon Road on Southland Road and School Road (southwest corner). Asking \$2,000. per acre. Negotiable. Owner will carry with 10% down. Contact Steven at 602-432-4141 for more information.

LARGE BRICK GETTING A FACE LIFT has nice corrals and barn, close to Logan NM and Ute Lake \$300,000.00. Call 575-403-7161.

LOGAN, NM 3 BDR, 2 SHOWER, ALL ELECTRIC, New AC/Heat, wood cabinets, doors, windows, roof, septic, two water wells, beautiful place on 14 acres a couple miles from Ute Lake. All hwy access. Asking \$225,000.00. more acres available from family member. Call 575-403-7161.

ALAMOGORDO - 4 ACRES OF PRIME FRONTAGE right on Highway 54. For sale by owner for \$120,000. Owner will finance for 50% down payment. Call Gus at 915-241-7272 for more information.

DATIL, 0000 2 RED FEATHER WELL ROAD, 40 acre tract for \$24,000. Off grid living or hunting. Vacant land. Big Mesa Realty, 575-456-2000. Paul Stout, broker, NMREL 17843, 575-760-5461. www.bigmesarealty.com

DATIL, 0000 3 HERRINGTON CANYON ROAD, 40 acre tract for \$24,000. Off grid living or hunting. Vacant land. Big Mesa Realty, 575-456-2000. Paul Stout, broker, NMREL 17843, 575-760-5461. www.bigmesarealty.com

SANTA ROSA 0000 NO SE ROAD (East of Los Tanos Creek in Northeast corner of Hollywood Ranch Subdivision) 10 acres with great views of surrounding mesa lands \$10,000. Big Mesa Realty, 575-456-2000. Paul Stout, broker, NMREL 17843, 575-760-5461. www.bigmesarealty.com

LEA, EDDY, CHAVES, LINCOLN AND TORRANCE COUNTIES, we want your working farms and ranch properties to list and sell. Big Mesa Realty, 575-456-2000, Paul Stout, broker, NMREL 17843, 575-760-5461. www.bigmesarealty.com

COLFAX, HARDING, GUADALUPE, SAN MIGUEL, MORA AND UNION COUNTIES, we want your working ranch properties to list and sell. Big Mesa Realty, 575-456-2000, Paul Stout, broker, NMREL 17843, 575-760-5461. www.bigmesarealty.com

FOR SALE, TWO LOTS ON HIGHWAY 6 frontage in Valencia County at mile marker 4. Electricity is close by. Lots are side by side, and each lot is 1.1 Acre at \$21,500 each. Also have a 1.4 acre lot on side of mesa with incredible views. Will make a sweet cash deal on all three lots. 505.604.0635.

CONCHAS, 626 HIDDEN PLACE, Three adjoining lots with electricity, septic and community water \$50,000. Big Mesa Realty, 575 456-2000, Paul Stout, Broker NMREL 17843, 575 760-5461. www.bigmesarealty.com

DATIL, 85 NORTHERN TRAIL, Sugarloaf Mountain Subdivision. Two lots totaling just over 13 acres. Small cabin. Great view of Sugarloaf Mountain. \$45,000. Big Mesa Realty, 575 456-2000, Paul Stout, Broker NMREL 17843, 575 760-5461. www.bigmesarealty.com

Vehicles

FOR SALE - 2014 F-250 FORD PICKUP, long bed, stretch cab, BW hitch, etc. For more information call Bill @ 575-742-6500.

3 TRUCKS NEED GONE, 2004, 4-DOOR, 4X4, F150 on a 4" factory lift, beautiful truck, motor is sick asking asking \$5,000.00. 2007 ext cab chev 4x4 runs transmission is needing repaired asking \$5,000.00, 1954 cute old truck runs when it wants to needs a paint job and some TLC asking \$8,000.00. Call 575-403-7161.

1995 FORD F-250. 4X4 5.8 GAS ENGINE. Utility truck with locking doors. Brand new automatic transmission with warranty. \$13,500 OBO. New windshield, radiator and many new upgrades. Call or text Joseph, 505-610-9740.

WANTED: FULL-SIZED DODGE 4X4 PICKUP or Ramcharger, 1991 or older, any condition, wrecked or running. 505-420-8289.

To Place a Classified Ad

1. Visit www.enchantment.coop/classifieds and complete form. You will be contacted by email with price and deadline to submit check or money order.
2. Ads will not be accepted over the phone.
3. Or, complete form and select category.
4. Write ad on another sheet of paper.
5. Price: \$20 up to first 40 words per ad, per category, per month. After 40 words, each word is 50 cents. Add \$5 for small graphics such as cattle brands. Phone numbers, emails and websites count as one word.

To Send and Pay Your Classified Ad

1. Mail ad and payment (**Payable to NMRECA**) NMRECA • enchantment 614 Don Gaspar Ave. Santa Fe, NM 87505

Deadline

1. **Due the 7th, one month prior.** Ex: Ads due February 7 for the March issue.

Good to Know

1. Only members of New Mexico electric cooperatives may place ads.
2. We reserve the right to reject any ad.
4. Advertisements in enchantment are paid solicitations and are not endorsed by the publisher or the electric cooperatives of New Mexico.
5. **PRODUCT SATISFACTION AND DELIVERY RESPONSIBILITY LIE SOLELY WITH THE ADVERTISER.**
6. Enchantment prints monthly, except for June and December.

Questions?

Call: 505-982-4671.

Name: _____

Address: _____

City: _____

State: _____ ZIP: _____

Phone: _____

Cooperative: _____

Select Category Below

- | | |
|------------------------------------|--------------------------------------|
| <input type="checkbox"/> Animals | <input type="checkbox"/> Great Finds |
| <input type="checkbox"/> Business | <input type="checkbox"/> Real Estate |
| <input type="checkbox"/> Equipment | <input type="checkbox"/> Vehicles |

enchantment.coop

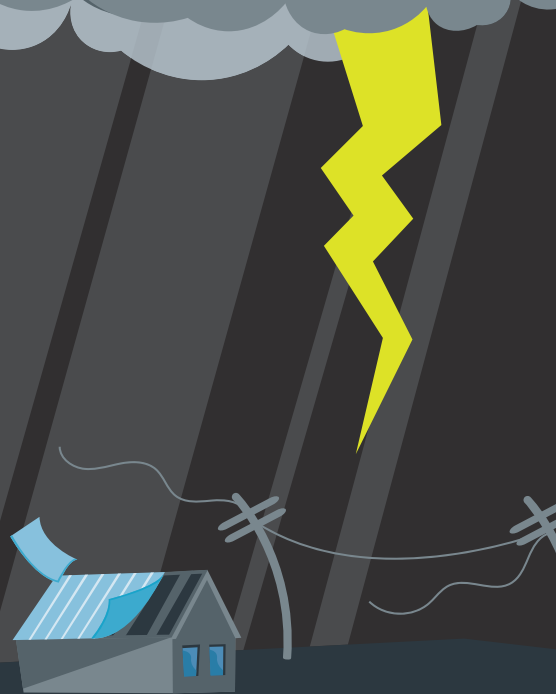
STORM SAFETY FILL-IN-THE-BLANK

Spring is a wonderful season,
but it can bring powerful storms.

Read the clues below, then use the
word bank to complete the storm
safety tips.



1. Keep a _____
handy in case of a power outage.
2. Be watchful for signs of a
thunderstorm, including
dark skies, flashes of
_____ or
strong winds.
3. If a _____ is
issued, seek shelter in a
centrally-located room in your
home, a basement or storm cellar.
4. If you're outside and hear
_____,
go indoors immediately.
5. Practice a tornado
_____ with
your family once a year.



WORD BANK

- thunder
- drill
- flashlight
- tornado warning
- lightning

Answer Key: 1. flashlight 2. lightning 3. tornado warning 4. thunder 5. drill



Stay Warm and Safe By Using Space Heaters Wisely

As winter's icy grip tightens, many turn to space heaters for a quick burst of warmth. These handy appliances can be lifesavers but pose potential safety hazards if not used properly.

To ensure a cozy and fire-free season, follow these essential space heater safety tips.

Location, Location, Location

- Maintain a 3-foot fireproof zone around your heater by keeping it away from curtains, furniture, bedding and even papers.
- Place your heater on a level, flat surface, away from anything that could tip it over. Avoid tables, counters and carpets.
- Don't overload outlets. Plug your heater directly into a wall outlet. Do not use extension cords or adapters.

Power Up With Caution

- Choose a heater certified by a well-known testing organization like UL or CSA.
- Buy a heater with an automatic shut-off feature for if it tips over.

- Look for a model with overheating protection to reduce fire hazard.

Mind Your Habits

- Never leave your heater unattended. Turn off and unplug it when you leave the room or sleep.
- Keep children and pets away to avoid burns or accidental tipping.
- Don't hang clothes or towels on your heater to dry.
- Clean your heater according to the manufacturer's instructions to prevent dust buildup and ensure proper airflow.

Bonus Safety Tip

- Install multiple smoke detectors, especially in or near bedrooms.

Follow these simple tips to enjoy warmth and comfort without compromising safety. 📺



AROUND NEW MEXICO

The Land of Enchantment. New Mexico is filled with stunning desert landscapes, breathtaking mountain ranges, and a diverse range of 18 national and 35 state parks, not to mention historic cities like Santa Fe, Albuquerque, Las Cruces and Taos. New Mexico is a fusion of culture with Native American, Mexican and Spanish heritage. It is a truly unique state offering something for everyone. Here are a few local events you might want to add to your calendar:

February 1 - Red River

Red River Songwriters' Festival

Discover the majestic mountains of northern New Mexico during a few remarkable days with cherished songwriters. The Texas Red's Red River Songwriters' Festival—crafted by Drew Kennedy, Josh Grider, Walt Wilkins, Susan Gibson, Brandy Zdan and Kelley Mickwee in 2012—guarantees an exclusive and close-knit experience.

www.redriversongs.com

February 2-25 - Las Cruces

For the Love of Art Month

Every February, ArtForms' members organize and promote For the Love of Art Month. The event started after the Las Cruces City Council's proclamation declaring arts a vital component of a community's quality of life. Local galleries, museums, non-traditional venues and artists' studios welcome the public to exhibits reflecting the vibrancy, diversity, history and culture of art in southern New Mexico. Special activities include studio and gallery tours, a member art show and art venues all around the town.

www.artformsmn.org

February 7 - Santa Fe

Equal Grounds: Creating Equality in our Community

Spice up your morning with coffee, snacks and a heart-to-heart talk about our community and city businesses. Dive into the buzz on what matters to you! Bring your open mind and heart and help us build a stronger city together.

www.tickettailor.com/events/humanrightsaliancesantafe/1115015

February 8-13 - Red River

Mardi Gras in the Mountains

Mardi Gras in the Mountains is proud to welcome back a collection of award-winning artists. Huval and friends—from south Louisiana—are event favorites and will perform at numerous locations throughout town. This talented group for 2024 includes Huval; his father, Rowdy; Beau Thomas; Randy Vidrine; and Trevor Landry.

mardigrasinthemountainredriver.com

February 9 - Albuquerque

Science on Tap—Nuclear Forensics: Science and Policy for a Safer World

Science on Tap is not your ordinary lecture series. Grab a beer from Bombs Away Beer Company and enjoy a relaxed presentation by scientists, researchers and subject matter experts on engaging topics. Join the group for an enlightening discussion with Dr. Stephen LaMont as he delves into the critical intersection of science and policy in nuclear forensics. Learn how this field shapes a safer world by thwarting the threat of nuclear terrorism. Discover the pivotal role of nuclear forensics in identifying and tracing illicitly acquired nuclear materials and its contribution to enhancing global nuclear security.

www.nuclearmuseum.org/visit/events

Include Your Upcoming Event

Our enchantment magazine readers asked for a local event calendar. So, here is a preview of the new Around New Mexico event calendar highlighting local events throughout the Land of Enchantment. Send your event details to eventcalendar@nmelectric.coop. Include the event title, date, town and a summary of the event. Include the event website address so readers can get additional event information. Submit the event notification at least 60 days before the event to meet our press deadline.

February 9-19 - Santa Fe

Art + Sol Santa Fe Winter Arts Festival

Traditionally thought of as a summer destination for music, opera and visual arts, Santa Fe is also home to a world-class performing arts and culture scene throughout the winter months.

Enjoy shows across town, experience world-class culinary offerings, take in stunning exhibitions at galleries and museums, and attend performances highlighting the absolute best of Santa Fe. The Art + Sol Festival offers a remarkable winter experience in the City Different.

artsantsantafe.org

February 10-11 - Albuquerque

Rail Yards Valentine Market

Stop, in the name of love and locality! Gather in the spirit of love and community at the Rail Yards Market in Albuquerque, New Mexico, for this special two-day event. More than 150 food, farm and artisan makers will be there, alongside historic views, shopping, food trucks, handmade gifts and performances.

railyardsmarket.org

February 23-24 - Truth or Consequences

Gathering of Quilts

Beautiful new works by local quilters, as well as historic quilts, are displayed at the annual Gathering of Quilts. Upward of 100 quilts can be seen at the quilt show. Demonstrations, vendors and quilt appraisals are offered during the two-day event from 9 a.m. to 4 p.m. Anyone is welcome to bring a quilt for the exhibit, from antique to newly made. Most years (but not all), the Sierra County Woodworkers group exhibits carvings in the hobby room adjacent to the Civic Center (behind the SJOA Thrift Store).

sierracountynewmexico.info/annualevent/gathering-of-quilts

Moderate winter temperature **45°**
Temperature inside the home **70°**
Temperature difference **25°**



Changing outside temperatures causes your home's heating system to work harder to maintain a constant temperature indoors. For example, on a moderate day, there may be a 25-degree difference in temperature inside and outside your home. On extreme weather days, the temperature difference may be 45 degrees or more. ILLUSTRATIONS COURTESY OF PIONEER UTILITY RESOURCES

Extreme Weather Mythbusters

The truth about winter energy efficiency and keeping electric bills in check

By Pam Spettel

After periods of extremely cold or hot weather, many people ask, "Why was my bill so high?" Here are some straightforward answers to how extreme weather affects residential energy use and drives higher electric bills, and what you can do to lower your bill.

Myth No. 1: Weather does not affect my electric bill.

Fact: The larger the difference between the temperature of the air outside and the temperature of the air inside, the more energy must be used to heat or cool the air. Even if you don't adjust the setting on your thermostat, changing outside temperatures mean your home's HVAC system must work harder to maintain a constant temperature indoors.

Myth No. 2: My bill should be the same as last month/year if I didn't adjust my thermostat.

Fact: When temperatures dip, running the heat for long periods of time can result in a significantly higher bill. The larger the difference between the temperature of the air outside and the temperature of the air inside, the more energy must be used to heat your home.

Myth No. 3: I can lower my bill using space heaters.

Fact: Most space heaters consume approximately 1,500 watts of electricity or more. A 1,500-watt space heater used for 12 hours a day for a month will add an extra \$50 dollars to your bill—for each space heater!

Myth No. 4: Turning off the upstairs HVAC unit will save money.

Fact: If you have two HVAC units and the upstairs unit is turned off, then the downstairs unit works even harder to supply heat for the entire home. As you heat the downstairs, that heat will rise

Extreme winter temperature 25°
Temperature inside the home 70°
Temperature difference 45°




upstairs. If there is a major temperature difference between upstairs and downstairs, your HVAC system will work twice as hard.

You can prevent your downstairs unit from overuse by turning on the upstairs unit and setting it a few degrees cooler than the downstairs one. If no one is upstairs, it does not need to be as warm as the main living area. Keep it cooler but not off. It takes more energy to reheat an area than to keep it at a lower temperature.

Myth No. 5: Closing vents and doors in unused rooms saves energy.

Fact: Keeping a vent closed prevents the warm air from going into a room, and this can negatively impact how your home circulates warm air. Closing off vents in unused rooms makes cold areas, and it prevents a consistent temperature in the home. Also, it is best to leave interior doors open when possible as this also aids in air circulation inside the home.

Myth No. 6: I can save on my electric bill by heating with my oven.

Fact: Running an electric oven costs even more than running a small space heater. The longer an oven is on—especially unattended—the greater the chance of an electrical malfunction leading to a fire. Ovens are designed to heat the small, internal area where your food is cooked, not an entire room in your home. 



Tips to Lower Your Electric Bill in Extreme Weather

- 1: Being smart about your thermostat settings can make a difference to your energy consumption. Reduce your home's thermostat setting to 68 degrees or lower during winter and 78 degrees during summer to use less energy and reduce your bills.
- 2: Replace your thermostat with a programmable one, and set it to a comfortable low temperature, gradually cooling down at bedtime and gradually warming in the morning.
- 3: Using space heaters is costly. Make sure the extra comfort is something you are willing to pay for.
- 4: Keep cold air out and warm air in. Seal drafty windows and doors and use draft protector snakes or rolled up towels to block drafts from your exterior doorways.
- 5: Replace HVAC filters as recommended by the manufacturer. Clogged and dirty air filters require HVAC systems to work harder and use more energy.
- 6: Make sure your water heater is in good working order. Flush the tank to remove mineral sediments that build up on the heating elements to increase its efficiency. Add a layer of insulation to your water heater and pipes to prevent heat from escaping.

youth art

March Topic:

Happy Women's History Month! Draw a picture of a woman who inspires you.

April Topic:

Draw your dream castle to live in.

Send Your Drawing

By mail: Youth Editor
614 Don Gaspar Ave.
Santa Fe, NM 87505
By email:
tcondit@nmelectric.coop

Deadline: Submit by the ninth, one month prior to publication.

Hooray!

Winners receive a \$15 gift card.

Have a Youth Art Topic?

Email or mail to the addresses above, or call 505-982-4671.

5 items to include on the back of your drawing, otherwise YOU ARE DISQUALIFIED:

1. Name
2. Age
3. Mailing Address
4. Phone Number
5. Electric Co-op

DON'T FORGET THESE ITEMS!

Artwork accepted up to age 13.

Happy Valentine's Day!

Congratulations to the winning artists who drew a picture of their loved ones.

Thalia Acosta • Age 10
Central New Mexico Electric Cooperative



Desarae Dodson • Age 11
Farmers' Electric Cooperative



Cerra Runer • Age 11
Southwestern Electric Cooperative



Alanda Rougemont • Age 11
Continental Divide Electric Cooperative



Madison Dodson • Age 12
Lea County Electric Cooperative



Darren Delvo • Age 13
Jemez Mountains Electric Cooperative



*Southwest Indian Foundation
and the
Gallup Cultural Center*

2024 STUDENT ART SHOW

**CALL FOR STUDENTS and ART
TEACHERS 3rd-12th Grades**

SATURDAY - APRIL 13, 2024

Hozho Academy Gym

Information @ (505)-728-8048



201 E. Historic
Highway 66
Gallup, New Mexico
505-728-8048



For the Members of
Farmers' Electric Cooperative



UPGRADE YOUR HVAC AND SAVE

Looking to comfortably heat your home this winter while being more efficient, environmentally friendly, and still save money? Consider a high-efficiency heat pump!

+ HEATS EFFICIENTLY IN SUB-ZERO TEMPERATURES

Modern cold climate heat pumps can heat homes efficiently down to -13°F and operate in sub-zero temperatures as low as -20°F.

+ IMPROVES YOUR HOME'S AIR QUALITY

Natural gas and propane furnaces generate heat by burning a mixture of fossil-fuel and air. Heat pumps don't use combustible fuel to create heat which eliminates potential exposure to dangerous combustion byproducts such as carbon monoxide.

+ SAVES MONEY COMPARED TO ELECTRIC BASEBOARD HEAT OR PROPANE FURNACES

A heat pump can transfer up to 300% more energy than it consumes, compared to a high-efficiency gas furnace's 95% rating. Because of this, electric heat pumps can also save substantially on fuel consumption.

VISIT US AT

www.tristate.coop/electrifyandsave



Tri-State is a not-for-profit power supplier to cooperatives and public power districts in Colorado, Nebraska, New Mexico and Wyoming.

A Touchstone Energy® Cooperative 