

enchantment

The Voice of New Mexico's
Rural Electric Cooperatives

FARMERS' ELECTRIC COOPERATIVE

MARCH 2022



What Happened to Sadie Orchard's Stagecoach? Page 14

Sadie Orchard's stagecoach now sits at Lincoln County Courthouse at the Lincoln Historic site. PHOTO COURTESY OF THE PALACE OF THE GOVERNORS PHOTO ARCHIVES

The GMCS Student Internship Initiative



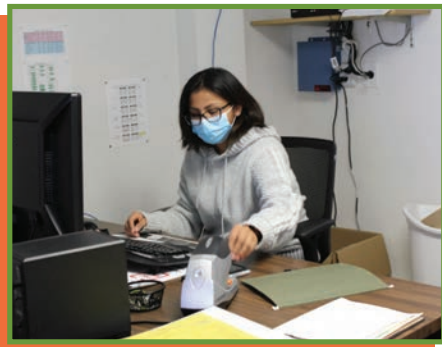
GMCS is so excited to be rolling out our Student Internship Program. We will employ these interns in a variety of fields. Some of the jobs that we've recently filled are for computer technicians, student teaching, film and video editing, nursing, occupational therapy, physical therapy, speech, social work, mechanical

service management, automotive technicians, mechanics, and graphic designer, to name a few.

Student internships provide invaluable real-life work experience. The student will learn other soft set skills, like communication, teamwork and professionalism. They will see how learned skills from the classroom can be applied to job tasks.

Students that may need more insight into their future goals will get better perspective. There is also a great opportunity for meeting new people which can create other opportunities for future employment.

Student Internships are a direct result of the District Vision of Elevate 2022 and directly meeting the objectives of increasing Post-Graduation Success and Increasing



Partnership with Community, Employers, and Agencies. Each of the high schools in the district are in the process of aligning their classes into Career Pathways. Each pathway has a 3-course sequence ending with a capstone course. The student internship is the capstone course for most of the participating seniors.

We have 27 students currently enrolled in the student internship. We are planning on expanding the program next year and hoping to triple the number of

students participating in this program.

Students are at various locations in the district depending upon the pathway focus. Some students are working in their own schools or in the feeder schools in their communities. Some schools are rotating to several locations in the districts. Some students are working at the district offices both from city and county schools. We have some students in our Art/Media pathway working with



industrial printing machinery and layouts in our graphic print shop at the Student Support Center.

We have several tools to evaluate the program for both individual students and the program overall. Employers are evaluating student interns' multiple times in the semesters as well as counselors supervising students for the scheduled courses for credit. All participating staff and students are meeting regularly to check in and follow up with requirements. Student Intern salaries are paid for by the district. Student transportation will be provided by the district as well, as needed. Students are participating in the internship for a semester.

GMCS Student Internships are open to all GMCS



seniors. Check with your school for the upcoming 2022-23 School Year and available positions. Contact your high school's career counselor for details.

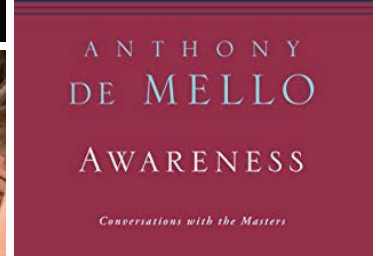
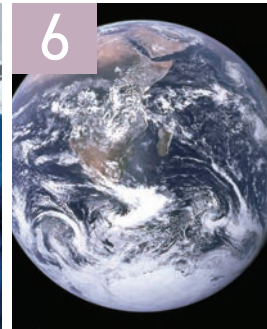
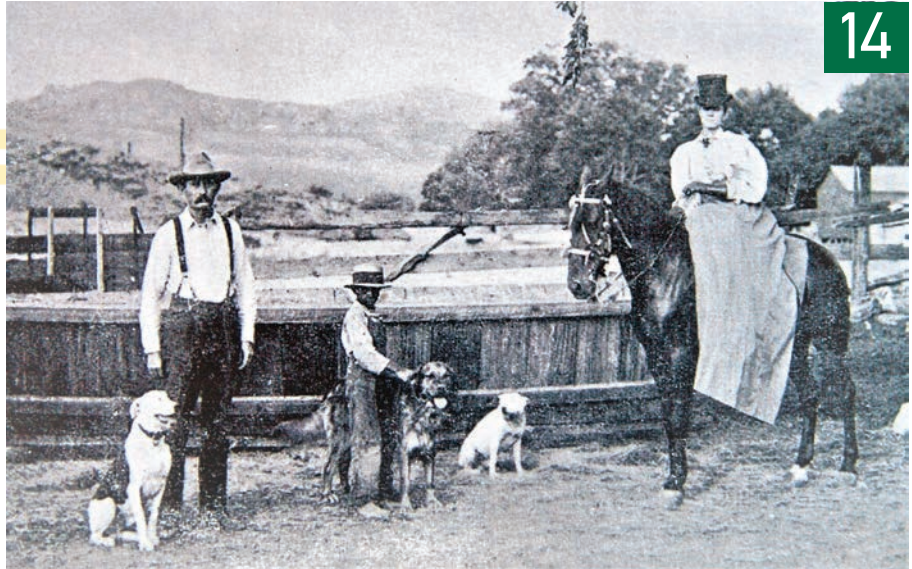


SPRING BREAK • MARCH 14-18

MARCH
2022

CONTENTS

- 04 We Are enchantment
- 05 View From enchantment
- 06 Hale to the Stars
- 08 Power Strips Versus Surge Protectors
- 10 Energy Sense
- 12 Book Chat
- 14 What Happened to Sadie Orchard's Stagecoach?
- 16 Your Electric Co-op
- 20 On the Menu
- 22 Tap Into Water Heating Savings
- 24 Energy Explorers Word Search
- 26 The Market Place
- 30 Youth Art



We live in the Land of Enchantment ...

We are *enchantment!*

Energy-Efficiency Tip of the Month

When was your cooling system last serviced? Most manufacturers recommend an annual tuneup for your home's cooling system. March is a great time to schedule this service so you can beat the summer rush.

A qualified professional can check the amount of refrigerant, accuracy of the thermostat and other items that impact the efficiency of your system.

How to contact *enchantment*:



Phone
505-982-4671



Email
enchantment@nmelectric.coop

Facebook
facebook.com/enchantmentnmreca

Mail
614 Don Gaspar Ave.
Santa Fe, NM 87505

Community Events
events@nmelectric.coop

Display Ads
enchantmentads@nmelectric.coop

Book Chat Inquiries
enchantment@nmelectric.coop



Take a photo of you holding YOUR MAGAZINE AND WIN!

Take a photo of yourself or someone else with the magazine and email it with a few words about the photo. Include your name, mailing address and co-op name.

One lucky member will win \$20. Submitting your photo(s) gives us permission to publish or post the photo(s) in *enchantment*, on Facebook and in other media outlets.

Email to: enchantment@nmelectric.coop

Congratulations to ...

Otero County Electric Cooperative members Jerry and Beth Walker say they never miss reading their copy of *enchantment* magazine.

They even took one edition to the end of the world on their 2022 trip to Antarctica.

The Walkers win \$20!



enchantment

March 1, 2022 • Vol. 74, No. 3
USPS 175-880 • ISSN 0046-1946

enchantment (ISSN 0046-1946) is published monthly by the New Mexico Rural Electric Cooperative Association, 614 Don Gaspar Ave., Santa Fe, NM 87505. *enchantment* provides reliable, helpful information on rural living and energy use to electric cooperative members and customers.

More than 100,000 families and businesses receive *enchantment* magazine as electric cooperative members. Nonmember subscriptions are available at \$12 a year or \$18 for two years, payable to NMRECA. Allow four to eight weeks for first delivery.

PERIODICAL POSTAGE paid at Santa Fe, NM 87501-9998 and additional mailing offices.

CHANGE OF ADDRESS: Postmaster, please send address changes to 614 Don Gaspar Ave., Santa Fe, NM 87505-4428. Readers who receive the publication through their electric cooperative membership should report address changes to their local electric cooperative office.

THE NEW MEXICO RURAL ELECTRIC COOPERATIVE ASSOCIATION

provides legislative and educational services to the cooperatives that are members of the association and deliver electric power to New Mexico's rural areas and small communities. The mission of the New Mexico Rural Electric Cooperative Association is to strengthen, support, unify and represent cooperative member interests at the local, state and national levels. Each cooperative has a representative on the association's board of directors, which controls the editorial content and advertising policy of *enchantment* through its Publications Committee.

OFFICERS OF THE BOARD OF DIRECTORS

Charles Pinson, president, Central Valley Electric Co-op, Artesia; Tim Morrow, vice president, Springer Electric Co-op, Springer; Duane Frost, secretary-treasurer, Central NM Electric Co-op, Mountainair.

BOARD OF DIRECTORS

Chris Martinez, Columbus Electric Co-op, Deming; Keith Gottlieb, Continental Divide Electric Co-op, Grants; Lance R. Adkins, Farmers' Electric Co-op, Clovis; Manny Bustos, Jemez Mountains Electric, Española; Robert Caudle, Lea County Electric Co-op, Lovington; James Ortiz, Mora-San Miguel Electric Cooperative, Mora; Thomas G. Rivas, Northern Rio Arriba Electric Co-op, Chama; Preston Stone, Otero County Electric Co-op, Cloudcroft; Antonio Sanchez Jr., Roosevelt County Electric Co-op, Portales; George Biel, Sierra Electric Co-op, Elephant Butte; Donald L. Wolberg, Socorro Electric Co-op, Socorro; Travis Sullivan, Southwestern Electric Co-op, Clayton; Wayne Connell, Tri-State G&T Association, Westminster, Colorado; Charles G. Wagner, Western Farmers Electric Co-op, Anadarko, Oklahoma.

NEW MEXICO RURAL ELECTRIC COOPERATIVE ASSOCIATION

614 Don Gaspar Ave. Phone: 505-982-4671
Santa Fe, NM 87505 Fax: 505-982-0153
nmelectric.coop enchantment.coop

Keven J. Groenewold, CEO, kgroenewold@nmelectric.coop
Tom Condit, director of communications, tcondit@nmelectric.coop

DISPLAY ADVERTISING: Rates available upon request. Co-op members and New Mexico display advertisers, email Shaylyn at enchantmentads@nmelectric.coop or call 505-252-2540. National representative: American MainStreet Publications, 800-626-1181.

Advertisements in *enchantment* are paid solicitations and are not endorsed by the publisher or the electric cooperatives that are members of the New Mexico Rural Electric Cooperative Association. PRODUCT SATISFACTION AND DELIVERY RESPONSIBILITY LIE SOLELY WITH THE ADVERTISER.

© 2022 New Mexico Rural Electric Cooperative Association Inc., in partnership with Pioneer Utility Resources. Reproduction prohibited without written permission of the publisher.



Grassroots Efforts Help Shape Our Communities

Every spring, I start planning for the emergence of my lawn from its winter dormancy. The timing must be right. You cannot water too early because a late freeze could break the sprinklers. You cannot fertilize too late, or the growth may be stunted. Without the protection of water and a strong grassroots system, most varieties of grass cannot survive a sweltering summer.

Oddly enough, great ideas are the same. If you share an idea too early without a community's support, it gets lost in the shuffle. If you lobby for an idea no one knows about—even something that would help everyone—lack of interest may cause the idea to wilt and die.

How do great ideas thrive? They need grassroots support.

Here in New Mexico, your electric co-op is looking out for you—making sure you have affordable, reliable and safe electricity. Sometimes, state or federal laws and regulations threaten this, so we lobby hard on your behalf. But without your support, our ideas often do not reach the right ears.

During the last two years, we have solicited your support for issues on social media. We count on Facebook and Twitter to get our issues out to the grassroots in a timely manner. This has worked very well—especially during this ongoing pandemic.

No matter how loudly we speak out on how legislation or an agency rule may affect electric bills, our voice dims in comparison to one of the most untapped resources in our community—YOU. We are a statewide association—YOU are a voter. We work hard on your behalf, but your support helps ideas take root and survive.

Let me give you a good example. Here in Santa Fe, we recently finished a 30-day legislative session. The pace of action is



fast and furious. Finding time to talk to legislators is a couple minutes here and a few words there. Sometimes you must catch them on the go as they rush from committee to committee.


This changes when the visit with a legislator includes a constituent from back home. Legislators are always eager to catch up on the latest local happenings. They are extremely interested where you stand on the issues. At these meetings, there is always much more time for discussion. The bottom line is that you matter!

Whether it is through an email, a phone call or virtual call in these times, your elected officials are ready to listen. After watching this for 25 years now, I can say they genuinely care about what you have to say.

Are you ready to help your electric co-ops build a deeper grassroots base?

Contact your local co-op trustee or employee, or visit the co-op's website. They can show you ways to sign up to make your voice heard to keep your electric bill affordable.

We have seen thousands of impressions and responses to our social media calls to action. We receive many accolades from you, the members, for getting the issues out to rural New Mexico quickly. Some of these issues come up in committee with less than 24 hours notice.

Here at the statewide association and at our 15 electric distribution cooperative members across the state, we are committed to powering your community and empowering you to improve your quality of life. We work collaboratively with political leaders and want to arm you with the tools needed to help us plant deeper grassroots. Learn more at www.nmelectric.coop. 



Still So Much To Discover

For the first time in many months, none of our solar system's bright planets is visible in our evening skies during March.

The only planet visible at all during the evening is distant Uranus, now traveling slowly through the constellation of Aries fairly low in the western sky. A pair of binoculars is usually sufficient to see it, but only when viewed through a telescope does it begin to appear as something other than just a point of light.

In contrast, however, the morning sky bustles with planet activity this month. The highlight is Venus, which gleams brilliantly in the pre-dawn hours throughout the entire month. Slightly lower is Mars and then Saturn, both of which gradually climb higher into the eastern sky. During the latter part of March, all three worlds are rather close together and form a distinct triangle. On the morning of Monday, March 28, a thin crescent moon also joins this grouping.

Mercury is also visible low in the east at the beginning of March, but it is sinking

rapidly and disappears into the dawn within about a week. On Wednesday morning, March 2, it has a moderately close conjunction with Saturn, although this will not be easy to see because the two worlds are rather deep in twilight at that time.

This month marks 30 years since I successfully defended my doctoral dissertation on exoplanets (i.e., planets beyond the solar system and orbiting other stars). At that time, the study of exoplanets was brand-new. Indeed, the discovery of the first confirmed such objects had only been announced less than two months earlier. Since then, our knowledge of these worlds has exploded.

Today, there are almost 5,000 confirmed exoplanets, and we know of more than 800 planetary systems that contain multiple planets. We also know of several "rogue" planets—planets that do not orbit any specific star. Late last year, the European Southern Observatory reported the discovery of

approximately 100 such objects.

What we have learned from the planets discovered thus far is profound on several levels. It now appears likely that many, if not most or even almost all, stars have accompanying planets. However, not only does it appear that our solar system is not a typical planetary system, there in fact appears to be no such thing as a "typical" planetary system.

In the meantime, while several planets the approximate size of Earth have been discovered, there are enough variables involved such that any worlds that could be considered as being an "Earth 2" might be very rare. ☾

The only known Earth-like planet in the universe, at least, at this time. This is the famous "Blue Marble" photograph of Earth taken in December 1972 by the crew of the Apollo 17 mission, which included New Mexico native Harrison "Jack" Schmitt.
PHOTO COURTESY OF NASA

The Invention of the Year

The world's lightest and most portable mobility device

Once in a lifetime, a product comes along that truly moves people. Introducing the future of battery-powered personal transportation . . . The Zinger.

Throughout the ages, there have been many important advances in mobility. Canes, walkers, rollators, and scooters were created to help people with mobility issues get around and retain their independence. Lately, however, there haven't been any new improvements to these existing products or developments in this field. Until now. Recently, an innovative design engineer who's developed one of the world's most popular products created a completely new breakthrough . . . a personal electric vehicle. It's called the **Zinger**, and there is nothing out there quite like it.

"What my wife especially loves is it gives her back feelings of safety and independence which has given a real boost to her confidence and happiness! Thank You!"

—Kent C., California

The first thing you'll notice about the **Zinger** is its unique look. It doesn't look like a scooter. Its sleek, lightweight yet durable frame is made with aircraft grade aluminum. It weighs only 47.2 lbs but can handle a passenger that's up to 275 lbs! It features one-touch



Available in Green, Black (shown) and Blue



The Zinger folds to a mere 10 inches.

folding and unfolding – when folded it can be wheeled around like a suitcase and fits easily into a backseat or trunk. Then, there are the steering levers. They enable the **Zinger** to move forward, backward, turn on a dime and even pull right up to a table or desk. With its compact yet powerful motor it can go up to 6 miles an hour and its rechargeable battery can go up to 8 miles on a single charge. With its low center of gravity and inflatable tires it can handle rugged terrain and is virtually tip-proof. Think about it, you can take your **Zinger** almost anywhere, so you don't have to let mobility issues rule your life.

Why take our word for it. You can try the **Zinger** out for yourself with our exclusive home trial. Call now, and find out how you can try out a **Zinger** of your very own.

Zinger Chair®

Call now and receive a utility basket absolutely FREE with your order.

1-888-385-1027

Please mention code 116489 when ordering.



Now available in a Joystick model
(Zoomer Chair)

Joystick can be mounted on the right or left side for rider's comfort

Power Strips versus Surge Protectors

By Tom Tate

With the proliferation of electronics in our daily lives, there simply are not enough outlets in our homes. This is particularly true for older homes. As a result, we end up with a number of outlet expanders, more commonly known as power strips.

Power strips are generic and fulfill a simple function. They are inexpensive, and the quality often is on par with the price.

Keep this in mind when shopping for a power strip or a surge protector—the power strip's more talented cousin.

Before you buy, make sure you know the amperage rating of the outlet into which you are connecting the strip and other equipment. A residential circuit can

overload if you are not careful.

When buying a power strip:

- Look for power strips with a built-in circuit breaker. If you connect too many electronics and devices, the strip will kick out the circuit breaker rather than causing the breaker in your electric panel to trip.
- Pay attention to the orientation of the outlets. The typical design is along the length of the strip, facing the bottom or end of the strip.
- Get a smart strip, which is becoming more common and less expensive. With smart strips, one outlet serves as a master, receiving power all the time. The other outlets do not receive power until the master device is turned on. This is ideal for home entertainment setups.


If you are connecting expensive

electronics, consider a surge protector.

Price is important because a cheap surge protector can be worse than none at all for two reasons. One, they use cheap, small surge-fighting components. Two, these components can fail and when they do, the strip still may provide power without any indication its protective side is gone.

As with power strips, key factors should be considered when buying a surge protector:

- Go for a significant joule rating. This is a measure of how much energy the surge protector can withstand.
- Look for cable and internet connection protection for use with your entertainment and computer equipment. Surges can enter via any wired connection. Be sure the protector is designed to handle a digital television. Otherwise, pixilation is likely for devices only designed for analog signals.
- Make sure an indicator light shows if protection has burned out.
- Consider the same outlet orientation as previously mentioned.
- Look for a power conditioning feature, which improves the quality of power delivered to electrical load equipment, such as computers.

Power strips and surge protectors are worth the investment when you follow these simple suggestions. Don't get burned buying cheap, inefficient strips and protectors. 

Protect expensive electronics with a surge protector. Be sure it is rated to support your electronic devices. For small devices, a smart power strip may be just the right fit.

ADOBE STOCK PHOTO BY JCJG PHOTOGRAPHY





CULTURE • COMMUNITY • CONNECTION



The Train Station!

MUSEUM • CAFE • BOOKSTORE

201 E. HISTORIC HIGHWAY 66

GALLUP, NEW MEXICO

505•728•8048



Get Your Ducts In a Row

Q: My HVAC system is a mystery to me. What can I do to maintain it and keep my home comfortable year-round?

A: For most people, the inner workings of the HVAC system are out of sight, out of mind. The system is ignored until something goes wrong.

Understanding the basics of how your heating and cooling system works will help you create a more efficient, comfortable living space. To get started, let's review how it works.

If you have a forced air system, you have ducts. A forced air system consists of the equipment that heats or cools the air and the ductwork that moves it around the home. Your furnace, or air handler, has a fan inside that pushes the heated or cooled air through the supply ducts into the rooms. The return ducts bring air back to the furnace to be heated or cooled again and sent back through the home.

This continuous loop of supply and return is susceptible to inefficient practices and leakage.

Here are some steps you can take to keep your system running efficiently and maintain a comfortable living space.

Check Your Vent Dampers

Make sure the air you paid to heat or cool is freely moving through the home.

I wish vents were made without dampers because the feature creates the misconception they should be closed. Closing registers does not save energy. It can cause your system to work harder, shortening its lifespan and increasing duct leakage.

If you don't do anything else after you read this, do check that your supply register dampers are open and not blocked by furniture or rugs throughout your house. This is easy and costs nothing.

Seal Your Ducts

If your ductwork travels through an attic, crawl space or other unconditioned—not heated or cooled—space, it could have holes, cracks or gaps that cause duct leakage. This wastes energy and money by heating or cooling spaces you don't use.

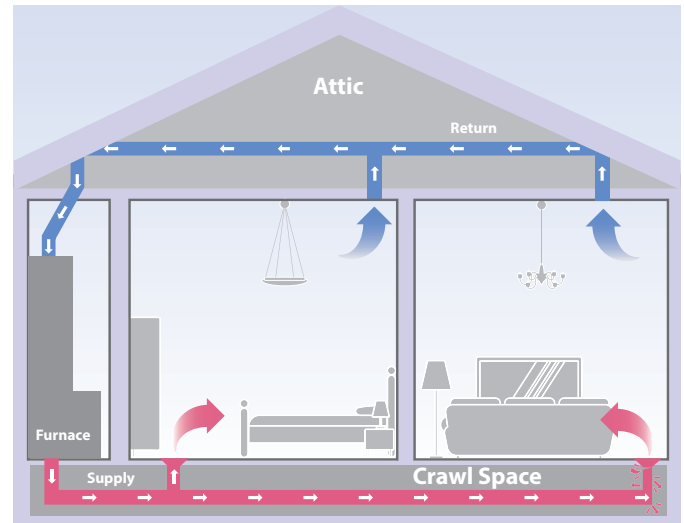
The U.S. Department of Energy estimates 20% to 30% of the air moved through duct systems is lost due to duct leakage. You could have the most efficient heating or cooling unit available, but if your ducts leak, you are wasting energy.

In addition to wasted energy, leaky ducts can cause air-quality issues. Leaks in return ducts can pull air into the ducts from surrounding spaces, through the furnace and then deliver it into the home.

This can introduce dust, dirt, insulation particles and other gross stuff that is in your attic, crawl space or walls to your air supply.

Sealing ducts can be difficult because they are hidden behind the walls, floor and/or ceiling. Attics and crawl spaces can be hard places to work. You can hire a professional to test your duct system for leakage with specialized equipment and seal your ducts.

If you seal ducts yourself, do not use duct tape. I know it is hard to believe, but duct tape dries out quickly and loses



A forced-air system consists of the equipment that heats or cools the air and the ductwork that moves it around the home. Your furnace fan pushes the heated or cooled air through the supply ducts into the rooms. The return ducts bring air back to the furnace to be heated or cooled again and sent back through the home. ILLUSTRATION BY DUY MAI/PIONEER UTILITY RESOURCES

its adhesion. Seal with metal tape or duct mastic specifically designed for the job.

One relatively easy place to seal is where the duct meets the floor, wall or ceiling. Remove the registers and look for cracks or gaps around the edges. Wear gloves to protect your hands.

Change Your Filter

The filter is on the return side of the duct system. It could be in the return registers or in the furnace. Checking your system's filter regularly and replacing it when dirty can help you improve your heating and cooling efficiency.

When it comes to filters, my philosophy is buy cheap and

replace often. I don't know about you, but I have a much more difficult time throwing away a \$20 filter than a \$5 filter. Save by buying filters in bulk or set up auto ship for every three months.

In most cases, filters are designed to protect the furnace, not improve air quality. If you are worried about your home's air quality, getting the ducts cleaned and sealed can help. Add an air purifier if you need additional air filtration. Look for Energy Star models.

Now that you know the inner workings of your HVAC system and what it needs to run efficiently, you can improve and maintain the comfort in your home year-round. 🏠



Miranda Boutelle has more than 20 years of experience helping people save energy. She has worked on energy-efficiency projects from the Midwest to the West Coast. Today, Miranda is director of operations and customer engagement at Efficiency Services Group in Oregon, a cooperatively owned energy-efficiency company.

This content was originally created by Efficiency Services Group LLC under contract with NRECA. NRECA retains ownership of this content. NRECA does not endorse Efficiency Services Group, its views herein expressed, nor any products or services it offers.



Plant Faster, Easier With **NEW SUPER PLUGS!**

Pre-cut plugs are 10x bigger!



OR...Plant Your Way With **FREESTYLE PLUGS!**

Cut any size plugs from sheets!



THE ONE-TIME, LIFETIME LAWN SOLUTION

SAVE OVER 50%

Stays lush and green in summer

7 Ways Our Amazoy™ Zoysia Lawn Saves You Time, Work and Money!

- 1** - CUTS WATER BILLS AND MOWING BY AS MUCH AS 2/3
- 2** - NO GARDENING EXPERIENCE NEEDED - NO DIGGING UP OLD GRASS
- 3** - GROWS IN POOR, ROCKY, SANDY OR CLAY SOIL - IT DOESN'T MATTER
- 4** - FOR SLOPES, PLAY AREAS, BARE SPOTS AND PARTIAL SHADE
- 5** - STAYS GREEN IN SPITE OF HEAT AND DROUGHT
- 6** - STOPS CRABGRASS AND MOST SUMMER WEEDS FROM GERMINATING
- 7** - ENDS COSTLY RE-SEEDING AND NEVER NEEDS REPLACEMENT

Zoysia Farm
NURSERIES
Improving America's Lawns Since 1953

GUARANTEED TO GROW Or We'll Replace Plugs FREE!

NOW 3 WAYS TO START YOUR AMAZOY ZOYSIA LAWN!

- 1. New Super Plugs** come in handy trays, pre-cut as individual 3"x3" plugs ready to plant. **Enough for 60 sq. ft. from \$25.95 + shipping.**
- 2. Freestyle Plugs** come in uncut sheets with up to 150-1" plugs. Or for less cutting and planting, make each plug bigger and plant them farther apart - your choice. **Enough for 300 sq. ft. from \$32.50 + shipping.**
- 3. Amazoy-Approved Seed** - As the Zoysia Experts for 60+ years, we finally have a Zoysia seed that meets our standards and homeowners' expectations. Available in 2-lb. bags, enough to cover over 1,000 sq. ft.

ORDER YOUR WAY TODAY!
www.ZoysiaFarms.com/mag

410-756-2311

Promo Code
5884

Harvested Daily From Our Farms
And Shipped To You Direct!

Amazoy is the trademark registered U.S. Patent Office for our Meyer Zoysia grass.
© 2022 Zoysia Farm Nurseries, 3617 Old Taneytown Rd, Taneytown, MD 21787

Order an
enchantment
gift subscription
today

1 Year: **\$12** or
2 Years: **\$18**

Mail payment
payable to
NMRECA with mailing
details of
person receiving
subscription:

Mail to:
enchantment
614 Don Gaspar Ave.
Santa Fe, NM 87505



J & J AUCTIONEERS
www.jandjauction.com
575-485-2508

Albuquerque Area Truck &
Equipment Auction

Saturday April 9th, 2022 at 8:30am
7700 Reading Ave SE ~ Albuquerque
NM



FEATURING:
HEAVY EQUIPMENT, FARM EQUIPMENT,
CARS, TRUCKS, TRAILERS, ATVs,
AGRICULTURAL EQUIPMENT,
ATTACHMENTS, AND MUCH MORE!

Now Accepting Consignments

JOE 575-447-2508
ROLAND 505-617-5345
JOHN 505-617-0799

**Visit our website for
upcoming auctions!!**

Check our website for more info!!



Rik Thompson
Realtor

*Farm & Ranch
Specialist*

505-350-3598

rik@republicranches.com

*As a Cattleman, I Understand
the Farm and Ranch Business*

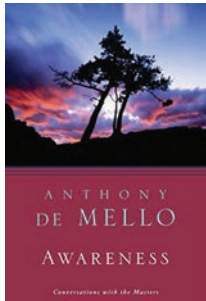
Republic Ranches, LLC
210-416-2737



3 J's Plumbing & Heating, Inc.

- ▶ High Efficiency Cooling/Heating Specialists
- ▶ New Installations/Repairs
- ▶ AC Conversations
- ▶ Tankless Water Heater Installs

Call: 505-270-4363
Visit: www.3jsplumbing.com



Awareness

Here's a standout and exceptional tome from the late Tony DeMello, deserving to be rescued from the obscure and dusty annals of the self-help genre.

DeMello's missive on "the perils and opportunities of reality" is shared with the candor and bluntness of someone with nothing to lose. In fact, you quickly come to believe DeMello has no pony in this race.

He reminds readers he does not intend to help you—most people can't be helped.

"Don't expect me to be of help to anyone," he writes. "If you are damaged, you did it; and if you are helped, you did it."

The best anyone can do, DeMello says, is challenge your ideas. If you're not open to being challenged, no one can help you. The most important idea DeMello imparts is a nudge toward self-observation.

DeMello says to be self-observant is to avoid personalizing your experiences. Instead, he invites readers "to look at things as if you have no connection with them whatsoever."

Much like within the philosophy of stoicism, and in the teachings of Buddhism, DeMello—whose work was later criticized by Pope Benedict XVI for being "incompatible with the Catholic faith and can cause grave harm"—believed human suffering could be avoided by detachment.

One powerful metaphor utilized by DeMello is the reimagining of our emotions, attachments and circumstances as clouds, while we are the sky. We can observe these feelings, like clouds, watching them pass, without becoming them.

DeMello's books are still available today in many Catholic bookshops, though they do include an advisory and a note that the book is not to be seen as a manual on Christian doctrine.

By Anthony DeMello
 1990 Crown Publishing Group
penguinrandomhouse.com



Holding on to Hope

Things are not going well for 15-year-old Analicia Rosario Menéndez when we meet her in the midst of her very personal, very real border-town

saga. Her brother was arrested in the middle of her quinceañera; her beloved Spanish teacher has disappeared; and her father, Dr. Menéndez, has been detained.

In this latest YA novel, award-winning author Catalina Claussen invites young readers to journey alongside Ana and her friends as they navigate painful realities with no easy solutions.

Claussen's Ana is brave, bold, compassionate and relatable. You'd be doing well by the young people you know to slip this distinctly New Mexican tale their way. This novel is also a New Mexico-Arizona Book Award finalist.

For more information, consider joining a free, virtual book release and reading from the author with special guest Xochitl Hernandez Moctezuma—who inspired the book—on Tuesday, March 30, from 6 to 7 p.m. For more information visit catalinaclaussenbooks.wordpress.com.

By Catalina Claussen
 Progressive Rising Phoenix Press
Progressiverisingphoenix.com



A Guide to New Mexico Film

As the subtitle of this new guide from University of New Mexico Press suggests, from "Billy the Kid to Breaking Bad and Beyond," our Southwestern locale,

with great weather and generous incentives for filmmakers, has become a bonafide favorite location for the film industry.

One recent study released by the state Economic Development Department and the New Mexico Film Office shows that for every dollar the state invested in the film and television industry during fiscal years 2020 and 2021, it got back \$8.40—to the tune of a direct benefit of \$854 million.

With that success has also come a burgeoning film tourism industry—just ask anyone who lives near Piermont Drive in Albuquerque where you can't swing a tote bag with a zia on it, without hitting a "Breaking Bad" pilgrim.

This highly researched guide, from a New Mexican author with his own film and television CV, is gorgeous to hold and does well to offer film fans an analog companion to their screen time passions.

It's more than a site map for famous film locales. This field guide boasts insider tips on where to eat, sleep, drink and play.

More than 50 destinations are included, as well as crew memories, fun facts and historical insight. Just try for yourself to unsee Roswell, for example, in these cinematic terms: "On the map, Roswell sits between mountains and the plains. On film and in pop culture, it exists between science fiction and Westerns."

By Jason Strykowski
 University of New Mexico Press
unmpress.com

Book Review Requests

All book reviews are at the sole discretion of the book reviewer.

By submitting a book, it is not a guarantee it will be reviewed.

Send your book to:

ATTN: Book Chat
 614 Don Gaspar Ave.
 Santa Fe, NM 87505





MUELLER METAL BUILDINGS

COUNT ON US FOR CUSTOM BUILDINGS

With Mueller, you have access to a wide range of high-quality steel buildings. We manufacture each building to meet your needs and deliver real value. Additionally, you can select from a variety of colors with limited paint warranties up to 40 years. Start designing your building today at www.muellerinc.com/3d-tool.



Learn more at: www.muellerinc.com
877-2-MUELLER (877-268-3553)



WHAT HAPPENED TO SADIE ORCHARD'S STAGECOACH?



By Dixie Boyle

Once a well-known madam and brothel owner in Kingston and Hillsboro, Sadie Orchard appeared in New Mexico's Black Range in 1886. She established a popular brothel in the rip-roaring silver mining town of Kingston. Sadie moved to Hillsboro six years later when silver was devalued, and miners were not keeping her in business. She established another brothel—Ocean Grove Hotel—and a stagecoach line named Mountain Pride.

She is credited with being one of the first women stagecoach drivers in New Mexico.

Sadie claimed to have grown up and learned the skills of prostitution in London's Lime House district. She spoke with a cockney accent and was not afraid to use profanity and colorful language.

However, Sadie really grew up on a farm in Mill County, Iowa. Her neighbors were

from England and raised horses. That is where she developed her English accent and skills in training horses.

After relocating to Hillsboro, Sadie married J.W. Orchard. They ran a stage line between Lake Valley and Kingston, where they delivered the mail and passengers. The extensive operation consisted of 65 mules and horses, small passenger stages and a mud wagon.

Lake Valley and Kingston were supply locations along the stagecoach route the Orchards kept stocked and ready for the livestock used to pull the stagecoaches.

The stagecoach line never hurt for passengers. The comfortable coach had a pair of three-person seats inside and another set outside behind the driver's box. The somewhat luxurious stage for the era also provided plenty of room for luggage. A triangular storage area was at the rear of the coach and another in front under the driver's seat.

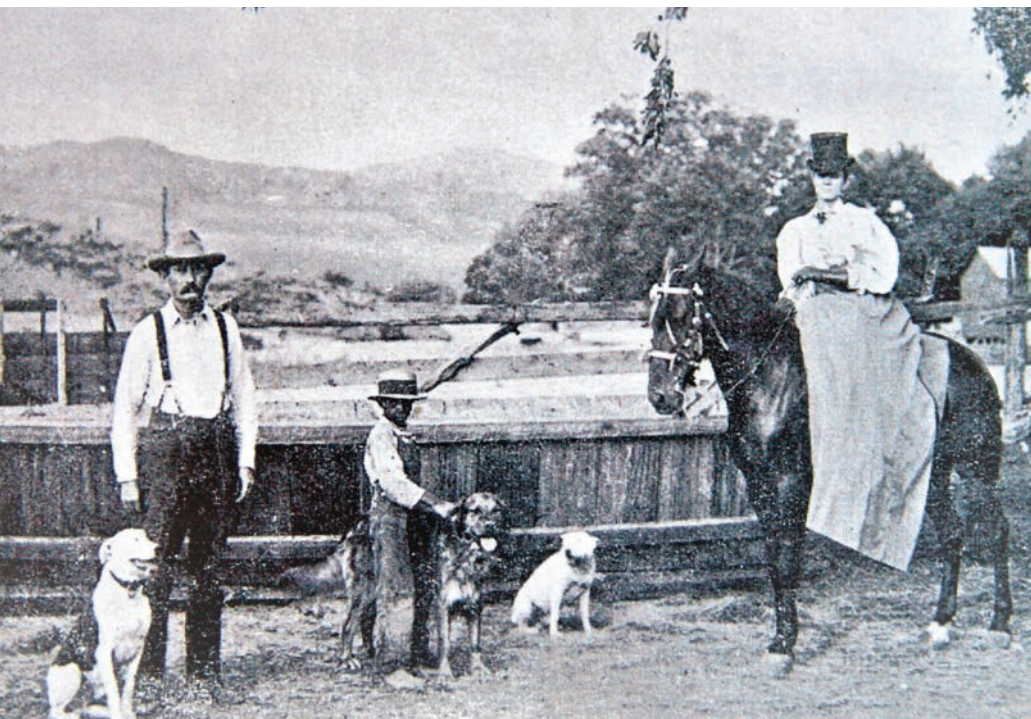
The coach had leather seats, oak floors and a swaying suspension that made it more comfortable than many coaches of the time. The body—painted dark red, yellow and black—was a bright contrast to the desert landscape it traveled. The windows were covered with heavy duck canvas and could be closed in case of rain or windstorms. Box-like lanterns were attached to the sides of the coach and used as running lights during poor weather or after dark.

Prices for riding the stage varied according to the difficulty of the terrain along the route. Passengers could ride one way from Lake Valley to Hillsboro for \$2. A round-trip ticket between Lake Valley and Kingston was \$5.50. One way between Hillsboro and Kingston was \$1.50.

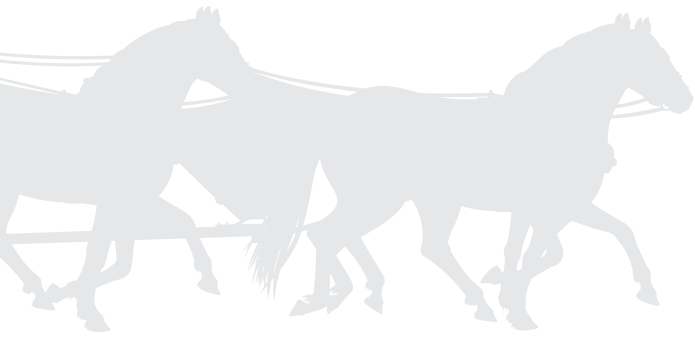
The Orchards' relationship had always been stormy, and they divorced in 1902. Their stagecoach ended its transportation history and became an exhibit on display by the Museum of New Mexico behind the Palace of the Governors in Santa Fe. After being outdoors for several years, there was concern about preserving the popular artifact.

To preserve the old stagecoach, it was moved to the former Lincoln County Courthouse at the Lincoln Historic Site. Sadie's stagecoach remains a popular exhibit in Lincoln, where its history coincides with the Western history of Billy the Kid and the Lincoln County Wars. More importantly, it will be preserved for future generations to enjoy.

Sadie lived in Hillsboro until her death



J.W. Orchard, Boots and Sadie with their dogs in Hillsboro. PHOTO COURTESY OF BLACK RANGE MUSEUM



CLOCKWISE FROM ABOVE: Sadie's stagecoach is displayed at Lincoln County Courthouse. Sadie as a young prostitute. Mountain Pride Stagecoach is on display in Santa Fe. PHOTOS COURTESY OF BLACK RANGE MUSEUM

in 1943. After her burial at Hot Springs Cemetery in Truth or Consequences, her history slowly faded and was all but forgotten. Her grave was neglected for decades until the Geronimo Springs Museum began to care for it and preserve Sadie's history. Her former Ocean Grove Hotel was purchased by the Hillsboro Historical Society in 2016 and is now a museum that sheds light on Sadie's exploits, the history of Hillsboro and the surrounding mining towns she once called home. 📖

References

Hillsboro Historical Society. Sadie Orchard Madam of New Mexico's Black Range. Hillsboro: Hillsboro Historical Society Publications, NM, 2019.

King, Patsy. Sadie Orchard the Time of Her Life. El Paso, Texas: PDX Printing, 2008.

Newspapers.com.



Farmers' Electric Cooperative



General Manager
Lance Adkins

Clovis Office
3701 Thornton
Clovis, NM 88102
575-762-4466

Ft. Sumner Office
618 East Sumner
Ft. Sumner, NM 88119
575-355-2291

Santa Rosa Office
1169 Historic Route 66
Santa Rosa, NM 88435
575-472-3971

Toll-Free
800-445-8541

Website
www.fecnm.org

Office Hours
8 a.m. to 5 p.m. (M-F)

"Owned By Those We Serve"

Board of Trustees

President
Michael B. West
Fort Sumner, District 3

Vice President
George Dodge Jr.
Santa Rosa, District 4

Secretary-Treasurer
Donnie Bidegain
San Jon/Logan, District 7

Judy Smith
Tucumcari-Ragland, District 5

Ernest Riley
Melrose, District 2

Justin Barnes
Clovis, District 1

John Pat Woods
Broadview/Grady, District 6

Board Meeting

The Board of Trustees meets the fourth Tuesday of the month at 9 a.m. in the Clovis cooperative boardroom.

This institution is an equal opportunity provider and employer.



Annual Meeting Date Set

We look forward to visiting with you Saturday, May 14, 2022, at the cooperative's 84th Annual Meeting of Members. The meeting is in Fort Sumner, New Mexico, at the FSHS gymnasium. Door prizes will be awarded, and lunch will be served following the business meeting.

Because Farmers' Electric is locally owned and operated, your involvement is crucial. Mark your calendar today and plan to attend the annual meeting of your electric cooperative.

Help Ensure Lineworker Safety

A lineworker's job is one of the toughest in the business of providing you with electricity. Climbing poles and stringing wire in all kinds of weather and dealing with electrical hazards are serious matters.

You can help make the lineworker's job safer by following these simple suggestions:

- Don't hang birdhouses or basketball goals on utility/electric poles. Lineworkers will have a hard time navigating them if climbing is necessary.
- Don't landscape around poles or pad-mounted transformers with flower boxes or flower beds. Keep this area free of all obstacles.
- Don't hang or post signs on utility poles. These could cause the lineworker to slip while climbing. Even the staples or nails left behind are a climbing hazard.
- Don't use electrical equipment for your target practice. The damage done not only could harm you, but also could cause an outage affecting hundreds of your neighbors.



FEC lineworkers' jobs are dangerous enough. Do your part by keeping utility poles and pad-mounted transformers clear of obstructions and attachments.

WHAT TO DO: IF YOUR CAR CRASHES INTO A UTILITY POLE

Accidents happen. Would you know what to do if your car crashed into an electric utility pole? Knowing what to do could be the difference between life and death.

Always consider power lines and other electrical equipment to be live and dangerous!

IF A POWER LINE FALLS ON YOUR VEHICLE AND THERE IS **NO** FIRE:

Your safest option is to stay inside your vehicle until help arrives. The vehicle acts as a path for the electrical current to travel to reach the ground. You are safe inside the vehicle, but if you get out, you could be electrocuted.

Call 911 or your local electric utility for help.

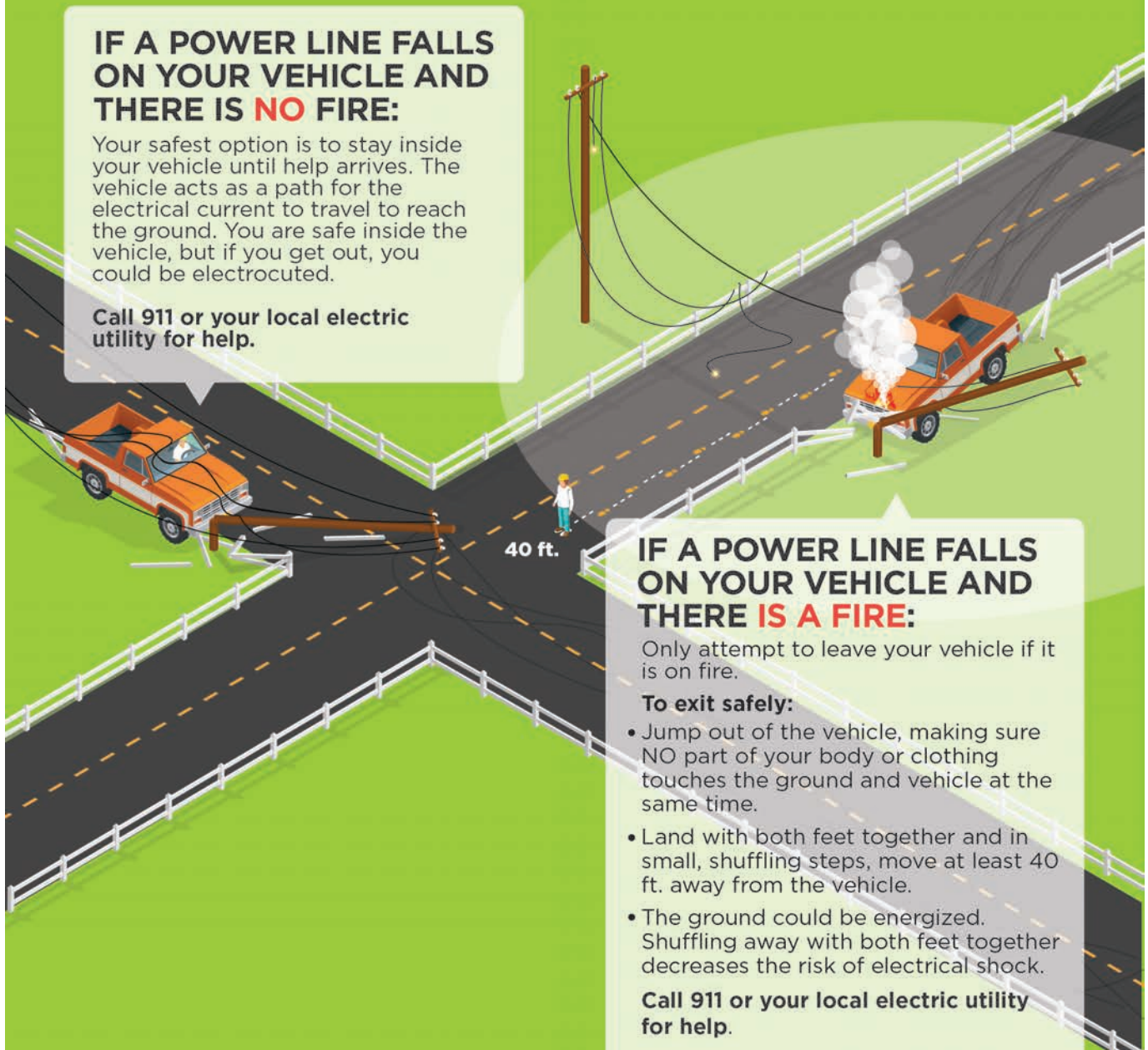
IF A POWER LINE FALLS ON YOUR VEHICLE AND THERE IS **A FIRE**:

Only attempt to leave your vehicle if it is on fire.

To exit safely:

- Jump out of the vehicle, making sure **NO** part of your body or clothing touches the ground and vehicle at the same time.
- Land with both feet together and in small, shuffling steps, move at least 40 ft. away from the vehicle.
- The ground could be energized. Shuffling away with both feet together decreases the risk of electrical shock.

Call 911 or your local electric utility for help.





 **ELECTRIFY AND SAVE**

UPGRADE TO ELECTRICITY AND SAVE IN YOUR HOME

Make the switch to electricity and keep money in your pocket with more efficient household appliances and systems. From heat pumps to electric vehicles, these proven technologies have the potential to run your home and life more simply, efficiently and cost-effectively.

LEARN MORE AT WWW.TRISTATE.COOP/BE

Tri-State is a not-for-profit power supplier to cooperatives and public power districts in Colorado, Nebraska, New Mexico and Wyoming.



A Touchstone Energy® Cooperative 



Empowering the West for 70 years

Tri-State Generation and Transmission Association and our member co-ops and public power districts have proudly connected communities for 70 years. Whether it's your home or business, together we've kept the lights on since 1952 and we're not slowing down now. Our family of electric cooperatives is dedicated to serving more than one million consumers with reliable, affordable and responsible power.

Because whatever the future holds, we'll power it.



TRI-STATE

WWW.TRISTATE.COOP

Gather for Fun and Food

Many times, the kitchen is the hub of the home where families gather for not only warm conversation but great home-crafted food. Both on-the-go and ambitious cooks can make use of these recipes, and both can be created while catching up on the day's events.

Butter-Fly Pie is a variation of the classic Shoofly Pie, which has been associated with Pennsylvania Dutch heritage. Historians say the pie originated in the mid-1880s as a cousin to the Jenny Lind pie, often considered a breakfast treat. Molasses lovers will enjoy every slice. Get everyone involved and enjoy time in the kitchen.

Butter-Fly Pie

- | | |
|--|--------------------------------|
| 1 homemade or prepared pastry for single-crust pie | 4 tablespoons butter, softened |
| 1 cup butterscotch baking chips | 1 teaspoon baking soda |
| 1 ½ cups flour | 1 ½ cups water |
| ½ cup packed brown sugar | 1 egg, slightly beaten |
| | ⅔ cup molasses |

Prepare a 9-inch pie plate with pastry. Trim and shape edges as desired, leaving approximately ½ inch above the edge of the plate. If there is extra pastry after trimming, reroll on a floured surface and cut shapes with a decorative cookie cutter, if desired. Preheat oven to 350 F.

Sprinkle butterscotch chips on the bottom of the unbaked pastry.

In mixing bowl, combine flour and brown sugar. Cut butter in with a fork until mixture resembles crumbs. Remove ½ cup for topping. Add baking soda, water, egg and molasses, mixing to incorporate.

Pour mixture into pie shell, then sprinkle the reserved crumb mixture and garnish, if desired with pastry shell cutouts.

Bake until knife is inserted in center of pie comes out clean, approximately 40-50 minutes. Cool 15 minutes and serve warm.



Tacocado Wraps

- | | |
|-----------------------------|------------------------------------|
| 8 oz. cream cheese | 2 ripe avocados, peeled and sliced |
| 1 lb. ground beef | Grated cheese of choice |
| 1 tablespoon taco seasoning | Salsa |
| 4 flour tortillas, warmed | Chopped tomatoes |

In skillet, brown ground beef. Drain, then add ½ cup water and taco seasoning. Stir and fry until water is absorbed.

Add cream cheese to ground beef, stirring until cheese is incorporated.

Spread ½ cup of beef mixture on each tortilla. Layer avocados, salsa, tomatoes in tortillas. May add fresh greens of choice, if desired. Wrap tightly and serve while warm.



Sue Hutchison was born and raised a block from the freeway in Southern California. She had an early start with industrial, large-scale cooking before age 20. She's always been both a beach bum and at home in the kitchen, where she enjoys making new creations.

UNIDENTIFIED FOOD INVESTIGATORS

Occasionally, enchantment's Unidentified Food Investigator team will go undercover into a local New Mexican eatery to sample the fare. Where better to begin our UFI adventure than in Roswell, at Apizza Center.

Apizza Center courageously opened February 28, 2020, just as the COVID-19 pandemic was spreading. Ralph and Nick Capotorto opened the original restaurant in Fairfield, Connecticut during the 1970s, and their Philadelphia-inspired tastes are apparent in Apizza's extensive menu choices.

The UFI team sampled the Black and Blue Chips—house made potato chips smothered in blue cheese, scallions and balsamic glaze—as well as Apizza's Famous Philly Cheese Steak sandwich. Both were a delight, as was the impressive service provided by Alicia Capotorto and her crew.

Roswell's Apizza Center is open from 11 a.m. to 10 p.m. Monday through Saturday, at 505 N. Main Road. For information, call 575-623-7492.

Beware: The UFI team may strike near you! Watch for the next enchantment installment to highlight New Mexico's finest local eateries and feel free to recommend where you would like to have the team investigate.

CLOCKWISE, FROM TOP:
Apizza was founded by Ralph and Nick Capotorto. The Black and Blue chips come with blue cheese, scallions, and balsamic glaze. Apizza is influenced by Philadelphia cuisine, as seen in its Famous Philly Cheese Steak.

BACKGROUND PHOTO
COURTESY OF NASA/JPL-
CALTECH/UCLA



Apizza Center
Fairfield Ct. 1977



A Word About Water

Tap Into Water Heating Savings

If your home is like most, you and your family use about 64 gallons of water each day. If your water heater is electric, that probably accounts for about 18% of your power bill.

That makes your water heater the second-largest energy expense in your home. Why not use less electricity to heat it?

Today's high-efficiency water heaters use much less energy than

older models, so you don't need to give up comfort for energy savings. That's good news for your power bill.

There is a newer option to consider: an electric heat pump water heater. These units give you the hot water you need by pulling heat from the surrounding air to heat the water—like a refrigerator in reverse. Because they do not directly produce heat, electric heat pump water heaters are two to three times more energy efficient than standard units.

According to the U.S. Department of Energy, a family of four can save about \$350 a year on water heating costs, which adds up to \$3,750 over the lifetime of the unit.

A heat pump water heater may cost a bit more upfront than other models. However, according to DOE, most people see a payback in less than three years due to the unit's lower operating costs and energy savings. Look for the Energy Star label when shopping for a water heater.

Check with your electric cooperative to see if you qualify for a free water heater. If you are building a new home with an electric water heater or replacing a water heater in an older home, you could qualify for a free unit. If you are replacing an older electric water heater or want to switch from gas to electric, your cooperative may be able to help you upgrade.

Tankless electric water heaters are another option, but carefully weigh the benefits and drawbacks. These smaller units quickly heat water to provide it when called upon, but can use eight times more electricity than a standard water heater.

This high demand increases your cooperative's cost of purchased power, which plays an important role in how much you pay for electricity. In some cases, people who use electric tankless water heaters must upgrade their home's wiring to support the greater demand for electricity.

Before you buy a new water heater, speak with your electric cooperative's trusted energy advisers about your choices.

Other ways to lower your energy costs include setting your water heater's thermostat to no higher than 120 F, fixing leaks, installing low-flow fixtures, and using energy-efficient dishwashers and washing machines.

Helping you save energy and money is another way your hometown electric cooperative is always here for you. ■



PHOTO COURTESY OF RHEEM MANUFACTURING CO.

Field Dress For Success

The hunt for the perfect outdoorsman knife is over. There's only one tool you need: the Whitetail™ Hunting Knife—now **ONLY \$49!**

The consummate outdoorsman never goes on deep woods hunting trips without the essentials. Not just the basics for every hunting trip, but the items he's come to depend on over the years.

Our new **Whitetail™ Hunting Knife** will quickly become your go-to blade for every expedition. The Whitetail™ is a premium fixed-blade hunting knife that's perfect for skinning. With the Whitetail at hand, you'll be ready for field dressing in only seconds, and you'll never need a separate gut hook tool ever again. The Whitetail™ boasts a mighty 420 high carbon, full tang stainless steel blade, meaning the blade doesn't stop at the handle, it runs the full length of the knife. According to Gear Patrol, a full tang blade is key, saying "A full tang lends structural strength to the knife, allowing for better leverage ...think one long steel beam versus two."

The comfortable handle is made from pakkawood—moisture-resistant and more durable than hardwood. If hunting is your life, then the Whitetail™ Knife was designed to make your life easier.

With our limited edition **Whitetail™ Hunting Knife** you're getting the best in 21st-century construction with a classic look inspired by legendary American pioneers. What you won't get is the trumped up price tag. We know a thing or two about the hunt—like how to seek out and capture an outstanding, collector's-quality knife that won't cut into your bank account.

This knife can be yours to use out in the field or to display as the art piece it truly is. But don't wait. A knife of this caliber typically cost hundreds. Priced at an amazing **\$49**, we can't guarantee this knife will stick around for long. So call today!

Your satisfaction is 100% guaranteed.

Feel the knife in your hands, wear it on your hip, inspect the craftsmanship. If you don't feel like we cut you a fair deal, send it back within 30 days for a complete refund of the item price. But we believe that once you wrap your fingers around the **Whitetail's** handle, you'll be ready to carve your own niche into the wild

What customers are saying about Stauer knives...



"Good value. Great looking. Sufficiently sharp. Overall an "A" purchase and I ordered three."

— B. of Maryland



BONUS! Call today and you'll also receive this heavy duty sheath!

Whitetail™ Hunting Knife ~~\$79~~*

Offer Code Price Only **\$49** + S&P **Save \$30**

1-800-333-2045

Your Insider Offer Code: **WHK340-02**

You must use the insider offer code to get our special price.

Stauer® 14101 Southcross Drive W., Ste. 155, Dept. WHK340-02
Burnsville, Minnesota 55337 www.stauer.com

*Discount is only for customers who use the offer code versus the listed original Stauer.com price.



Not shown actual size.

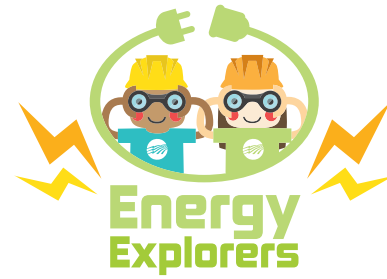


Rating of A+

- 5 1/4" 420HC stainless steel blade • Full-tang design with gut hook • Pakkawood handle with brass pins • Bonus heavy duty nylon sheath

Stauer...Afford the Extraordinary.

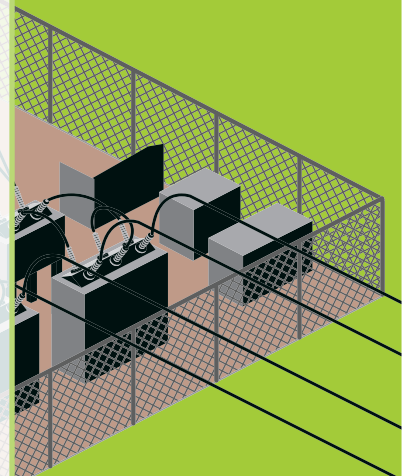
ELECTRICAL EQUIPMENT WORD SEARCH



Did you know we use a variety of equipment to send electricity to your home?

Read the facts below to learn about the equipment we use, then find and circle the bolded words in the puzzle below.

C	Y	F	S	S	B	U	R	U	X	S	Z	P	Z	S
T	U	R	S	O	E	Q	N	S	G	E	W	S	E	K
N	H	Z	T	B	V	N	Z	E	B	F	U	S	K	C
Z	N	B	Z	R	S	M	I	K	Y	X	U	I	J	U
E	J	A	D	K	X	Z	T	L	Z	S	E	E	E	R
S	G	L	F	Y	M	O	G	I	R	E	N	C	O	T
V	Z	Q	O	W	K	V	D	C	H	E	U	K	O	T
U	S	C	T	A	S	W	J	I	E	O	W	B	H	E
S	N	O	I	T	A	T	S	B	U	S	E	O	X	K
X	S	R	E	M	R	O	F	S	N	A	R	T	P	C
E	L	E	C	T	R	I	C	M	E	T	E	R	S	U
Y	B	G	V	H	U	N	P	D	L	K	C	R	R	B
B	L	P	T	G	I	F	N	Z	T	S	M	B	G	E
U	H	U	J	Y	Z	L	K	A	S	L	H	H	E	C
Z	B	R	I	Y	Q	I	U	J	M	F	H	Z	D	R



- **Transformers** look like large metal cans on top of utility poles or big green boxes on the ground. They reduce the voltage of electricity for safe use in your home.
- **Power lines** hang overhead or are placed underground to carry electricity from where it's generated to homes and businesses.
- Lineworkers use **bucket trucks** to reach power lines and poles when making repairs and updates to the electrical system.
- **Electric meters** are placed on the outside of homes to measure the amount of electricity you use.
- **Substations** are facilities that contain equipment to help control the flow of electricity.

FAST, RELIABLE INTERNET

Residential Internet Plans include:

- 24x7 dedicated support!
- UNLIMITED data download!
- 5 email accounts!
- Private IP address!
- Wireless router

**SPECIAL
PROMO***

Free Install with a
One-Year Term



866.215.5333
TWNCOMM.COM

*TWN Communications serves the following cities:
Deming, Edgewood, Elephant Butte, Las Cruces, Maxwell, Moriarty,
Mountainair, Raton, Sandia Park, Silver City, Socorro, Springer, Truth
or Consequences, and many of their surrounding communities.*

Services provided by TWN Communications. Not available in all areas. With approved credit. Restrictions, terms, and conditions apply. Taxes, regulatory, installation/activation, surcharges and other charges not included. Call for details or visit www.twncomm.com or for additional information and for terms and conditions of services. Customers on qualifying Internet plans may receive maximum download speeds ranging from 1.5 Mbps to 15.0 Mbps. Actual download speeds will vary. TWN Phone not available with satellite internet. Minimum 512 Kbps Internet connection speed required. International call rates apply. Unlimited calling applies to local and long distance calls within the contiguous United States. Digital Phone 911 Service operates differently than traditional 911. See www.twncomm.com/911.html for information. Unlimited usage subject to "fair and normal" usage limitations as described in terms and conditions. *Offer expires December 31, 2022. Free installation available on a one-year term Internet plan. Certain terms and conditions apply. Offer available for new customers. 281221_TWNEncchantment New Years Day 7.25x4.75

— BUYING —
OLD INDIAN ITEMS

303-888-2103
carnold21@gmail.com

Advertise in
enchantment



[enchantmentads@
nmelectric.coop](mailto:enchantmentads@nmelectric.coop)



THE TRUSTED CHOICE SINCE 1976!

We stock the area's largest supply of
all things pertaining to water!

- Solar well systems
- Full septic systems
- Plumbing fittings
- Poly pipe
- Water storage tanks
- PVC pipe
- Pressure tanks
- Fencing supplies

We are proud to serve our local
community and provide cost-effective
solutions for any water or well project.

On behalf of everyone at Williams
Windmill, we want to thank all our
customers for their patronage and look
forward to serving the Southwest for
many more years to come!

Exit 156 • Frontage Rd • Lemitar NM
(575) 835-1630 williamswindmill.com



THE MARKET PLACE

Animals

NOT ALL WATER TANKS ARE CREATED EQUAL! Are quality, value and longevity important to you? Buy high specific gravity, heavyweight, long warranty, superior black NRCS tanks. Lowest prices only provide minimum standards, lower weights and shorter warranties. Find out more! 575-430-1010.

NEW MEXICO DRINKING WATER STORAGE TANKS, heavy-duty black poly. Fittings customized to your needs. NRCS and EQUIP approved. High specific gravity, heavyweight, long warranty, algae resistant, black NRCS water tanks. Call 800-603-8272 or 575-682-2308.

RABBITS, ALL AGES AND SIZES. For pets, show, meat, fur. Polish, New Zealand, Californians. Cages, feeders, door latches, urine and wire guards. Call Gene at 505-906-1291 in Jamestown, New Mexico, at The Bunny Farm. All calls will be answered.

SADDLES AND TACK. Everything for the horse. Western & English tack bought and sold. Rancho Elisa Stables LLC, 500 Route 66 East, Moriarty, NM 87035. Call 505-832-5113 or email ranchoelisastablesfr@swcp.com

WOULD LIKE TO PURCHASE AN ALPACA CRIA, preferably two months or younger that can be hand raised. Please call 575-626-4836, will give reasonable price.

QUALITY HAYGRAZER. Warner Sweet Bee, nitrates test very good, fine stemmed 4' x 6' round bales. Price in field \$120. per ton or \$65. per bale. Thirty miles southeast of Portales, NM. Call 575-760-4223 or 575-273-4220 for more information.

BLACK ANGUS BULLS. Thick easy fleshing, low maintenance bulls for sale. Range raised at high elevation. Trich and fertility tested. Low birth weight and Herd bulls available. Two year old bulls \$2,400. and yearlings \$2,000. Good Bulls. For more information call Bobby Salvo at 575-642-0962.

LET US MARKET YOUR LIVESTOCK. Live auction every Wednesday at 11 a.m. View online at dvauction.com, country bid or live auction. If you've got 'em, we'll sell 'em. Call 575-374-2505. fivestateslivestockauction@gmail.com

Business

SUNSET SADDLES OFFERS CUSTOM LEATHERWORK; ie: saddles, chaps, chinks, holsters, belts, etc. Also saddle and tack repair. Located in La Luz, NM. Call 575-257-8874 or email: sunsetsaddles@yahoo.com

HEARING AIDS TOO EXPENSIVE? Do you qualify for help or low payments? If so, call the Hearing Aid helpline at 866-479-1519 or email www.careconnectusa.org

GEPPETTO'S INSTRUMENT HOSPITAL, repairs on anything with strings. Basket-cases, custom hand-built instruments, complete restorations, inlay work, bow-hairing, hand-drawn blueprints for your instrument. "Dreams Can Come True, Ask Geppetto!" Call Steven Reich at 575-802-5688 for more information.

Equipment

GREAT OFFER ON SOLAR SUBMERSIBLE SHALLOW/DEEP WELL PUMPS! NRCS approved with two-year warranty on selected pumps with affordable, easy installation! For a custom quote, call 505-429-3093 or email us at solarwellpumpsonline@gmail.com, 24/7 service. Order online at our website: www.solarwellpumpsonline.com

DRINKING WATER STORAGE TANKS, heavy-duty black poly, proven algae resistant. 125 to 11,000 gallons, NRCS and EQUIP approved. Please give us a chance to serve you! MasterCard or Visa accepted. Call 575-682-2308 or 1-800-603-8272.

FISHING TACKLE WANTED: "Antique" lures, reels, rods, tackle boxes. Pre-1950, please. Collector paying highest prices for "Grandpaw's" tackle box. Lures \$50 to \$5,000 each. Reels \$100 to \$7,500 each. Send photos to: tacklechaser@aol.com or call Rick at 575-354-0365.

OVERHEAD FEED BINS. 1 to 4 compartment, 12 to 48 tons. Any size free standing cattle guards, no footing needed. Emery Welding, Clayton, New Mexico. Call 575-374-2320 or 575-207-7402. Email: eweld98@yahoo.com

FLATBED GOOSENECK TRAILER with ramps, 16,000 lb. axles, \$2,000. Box Blade 7 ft., \$600. Brush Hog, \$400. Post Hole Digger, \$400. Disk 5 ft., \$300. Mold Board single with coulter, \$300. Cultivator, \$300. Ripper Shank, \$200. Drag Blade, \$100. Call 575-418-5710 for more information.

IRRIGATION PIPE FOR SALE.

Good, used 8" and 10" PVC and aluminum pipe at discount prices. Also have, hydrants, valves, elbows, T's and plugs. Located in Taos and Pojoaque. Delivery available. Call Sierra at 575-770-8441 for more information.

GMC CANYON 20" WHEELS

OEM with Nokian studded snow tires, 255/55R20. Used, under one thousand miles. Valued at \$1,900. will take \$1,200. cash or best offer. Taos area. Call 575-758-3149 for more information.

FUEL SYSTEM FOR SALE, Gasboy Islander Plus Card System with printer-software interface for network. Gasboy 8853kx Dispenser Card System. Electric hose reel 1". Morrison Clock Gauge with alarm. Kay Manufacturing Above-Ground 4950 gallon DW steel tank. Located at Lovington, NM airport, can be moved. Contact DKD, LLC at 575-398-3490 for more information.

Great Finds

RAILROAD ITEMS WANTED:

Kerosene lanterns, brass locks, keys, badges, uniforms, bells, whistles, and pre-1950 employee timetables. Always seeking items from any early New Mexico railroad, especially D&RG, C&S, EP&NE, EP&SW, AT&SF, SP or Rock Island. Call Randy Dunson at 575-760-3341 or 575-356-6919.

WANTED: NEW MEXICO MOTORCYCLE LICENSE PLATES 1912-1970.

Paying \$100-\$500 each. Also buying NM car plates 1900-1923. Visit NMplates.com for history and 4,600 photographs of NM plates. Bill Johnston, Box 1, Organ, NM 88052-0001. Email: Bill@NMplates.com or call 575-382-7804.

BUYING OLD STUFF: Gas pumps and parts 1960's or earlier, advertising signs, neon clocks, old car parts in original boxes, motor oil cans, license plate collections, Route 66 items, old metal road signs, odd and weird stuff. Fair prices paid. Have pickup, will travel. Gas Guy in Embudo, 505-852-2995.

FISHING TACKLE WANTED:

"Antique" lures, reels, rods, tackle boxes. Pre-1950, please. Collector paying highest prices for "Grandpaw's" tackle box. Lures \$50 to \$5,000 each. Reels \$100 to \$7,500 each. Send photos to: tacklechaser@aol.com or call Rick at 575-354-0365.

HEADSTONES (I.E. CEMETERY MONUMENTS) is our business.

Over 1,000 designs. An eternal memory of a loved one. **TAOS MOUNTAIN HERITAGE.** Call 575-770-2507 or Email: taos_mt_heritage@msn.com Website: www.taosmountainheritage.com

6X6 STEEL SQUARE TUBING, 24' long. \$210. each. Total weight per stick is 800 lbs. No delivery. Pickup only. We will load Monday thru Friday, 8:00 am to 3:00 pm. Call 505-220-0767, for more information.

WANTED: OLDER AIRSTREAM, SPARTAN, SILVER STREAK, AVION or similar style travel trailers. Any condition considered. Wrecked or gutted trailers included. Please call Rick at 505-690-8272.

FOR SALE: Aircraft cable 1/4" at .07 cents a foot, 5/16" at .10 cents a foot, very nice cable. 5 - 10' conveyor rollers, \$100. each. 48 poultry delivery crates, \$20. each. 16 antique poultry delivery crates, \$80. each. 68 - 25 pound poultry feeders, \$10. each. Call 505-384-5163 for more information.

SPRING HAS SPRUNG AT ROUGH RIDER ANTIQUES

in Las Vegas. We have plant stands, watering cans, yard art, benches and colorful oilcloth to cover your patio table. We have added dealers since your last visit so there is a new mix of rustic, old farmhouse, Victorian and Mid-Century pieces. Even a room of rusty items, old tools and bent license plates. You never know what you will find. Treat yourself to a gift of jewelry and pick up a book or two for the road. Open everyday. Call for hours. 501 Railroad and East Lincoln, across from the train depot and the Castañeda, a Fred Harvey hotel. 505-454-8063.

WANT TO BUY A COUPLE OF OLD SWEET POTATO CRATES.

Please call 575-253-4657.

Real Estate

2 MOUNTAIN CABINS, 25+ acres at 8,000 feet, Wildhorse Ranch Subdivision, Pie Town, NM. Well on stream with 5,000 storage tank and fire hydrant. New Mexico Hunting unit 13. To view this property, go to: <https://fsbo.com/listings/listings/show/id/520104/>

CONCHAS, 0 AND 00 RIDGE DRIVE. Two tracts with two lots per each property (lots are 100 x 100 or .23 acre). Each tract has a permitted septic that has never been used. Electricity and co-op water nearby. \$45,000 per tract. Big Mesa Realty, 575-456-2000. Paul Stout, broker, NMREL 17843, 575-760-5461. www.bigmesarealty.com

CUERVO, 0 MESITA PASS ROAD, 148.13 acres in Mesita Ranch Subdivision. Beautiful mesa views, perfect for homesite and/or livestock. \$85,000. Big Mesa Realty, 575-456-2000. Paul Stout, broker, NMREL 17843, 575-760-5461. www.bigmesarealty.com

NOGAL, TBD BARBER AVENUE. 2.89 acres in Townsite of Nogal. Co-op water and electricity nearby. \$45,000. Big Mesa Realty, 575-456-2000. Paul Stout, broker, NMREL 17843, 575-760-5461. www.bigmesarealty.com

PIE TOWN, SOUTH OF WILD HORSE SUBDIVISION. Two tracts with closest access from Goat Ranch Road. One is 20 acres for \$12,000. and one is 40 acres for \$24,000. Vacant land. Big Mesa Realty, 575-456-2000. Paul Stout, broker, NMREL 17843, 575-760-5461. www.bigmesarealty.com

RIBERA, 340 CR B41E. SALE PENDING, 32.674 acres with 3-bedroom, 2-bath home with custom accents, hay barn, two detached garages. Just over 20 of those acres are in alfalfa and grass hay production. 1/2 mile to river front. See pictures and close to I-25. \$50,000. Big Mesa Realty, 575-456-2000. Paul Stout, broker, NMREL 17843, 575-760-5461. www.bigmesarealty.com

DATIL, 464 SOUTHERN TRAIL, SALE PENDING, SUGARLOAF MOUNTAIN SUBDIVISION, 15 acres vacant land. \$8,000. Big Mesa Realty, 575-456-2000. Paul Stout, broker, NMREL 17843, 575-760-5461. www.bigmesarealty.com

DATIL, HERRINGTON CANYON ROAD. Three properties, one east (40 acres) and two west/northwest (44 and 40 acres) vacant land. Starting at \$24,000. Big Mesa Realty, 575-456-2000. Paul Stout, broker, NMREL 17843, 575-760-5461. www.bigmesarealty.com

WANTED! WORKING FAMILY FARMS AND RANCHES to list and sell. Broker has over 45 years of experience working on a family farm in New Mexico and has been an owner and operator since 1988. Big Mesa Realty, 575-456-2000. Paul Stout, broker, NMREL 17843, 575-760-5461. www.bigmesarealty.com

CURRY, ROOSEVELT AND QUAY COUNTIES. In Clovis, Portales and Tucumcari, or in the country. We want your properties to list and sell. Broker is life resident of Curry County and Clovis native. Big Mesa Realty, 575-456-2000. Paul Stout, broker, NMREL 17843, 575-760-5461. www.bigmesarealty.com

FENCE LAKE, 295 PINE HILL ROAD. PRICE REDUCED, VERY MOTIVATED SELLER! 2-bedroom, 3-bathroom home on just over 60 acres, well, outbuildings, corrals, abundant wildlife and scenic views. \$250,000. Big Mesa Realty, 575-456-2000. Paul Stout, broker, NMREL 17843, 575-760-5461. www.bigmesarealty.com

PIE TOWN, 0 LOU LOU LANE, WILD HORSE SUBDIVISION. Lot just over 20 acres. Great views. Vacant land. \$29,000. Big Mesa Realty, 575-456-2000, Paul Stout, broker, NMREL 17843, 575-760-5461. www.bigmesarealty.com

TUCUMCARI, WEST OF UTE LAKE. East of Quay Road Al. Seven 40 acre (more or less) parcels with lake and mesalands views. One of the seven lots is west of Quay Road Al fronting Ute Lake. Call for appointment to show and pricing. Big Mesa Realty, 575-456-2000. Paul Stout, broker, NMREL 17843, 575-760-5461. www.bigmesarealty.com

CONCHAS, 204 CONCHAS PLACE. 2-bedroom, 2-bath home with great views of the lake. Upper level has kitchen and deck. Tall carport for RV or boat. Two car garage. \$189,000. Big Mesa Realty, 575-456-2000, Paul Stout, broker, NMREL 17843, 575-760-5461. www.bigmesarealty.com

To Place a Classified Ad

1. Visit www.enchantment.coop/classifieds and complete form. You will be contacted by email with price and to pay by credit card (5% processing fee).
2. Or, complete form and select category.
3. Write ad on another sheet of paper.
4. Price: \$20 up to first 40 words per ad, per category, per month. After 40 words, each word is 50 cents. Add \$5 for small graphics such as cattle brands. Phone numbers, emails and websites count as one word.

To Send and Pay Your Classified Ad

1. Mail ad and payment (**Payable to NMRECA**)
NMRECA • enchantment
614 Don Gaspar Ave.
Santa Fe, NM 87505

Deadline

1. **Due the 9th, one month prior.**
Ex: Ads due March 9 for the April issue.

Good to Know

1. Only members of New Mexico electric cooperatives may place ads.
2. We reserve the right to reject any ad.
4. Advertisements in enchantment are paid solicitations and are not endorsed by the publisher or the electric cooperatives of New Mexico.
5. **PRODUCT SATISFACTION AND DELIVERY RESPONSIBILITY LIE SOLELY WITH THE ADVERTISER.**

Questions

1. Call: 505-982-4671 or
2. Email: enchantment@nmelectric.coop

Name: _____

Address: _____

City: _____

State: _____ ZIP: _____

Phone: _____

Cooperative: _____

Select Category Below

- | | |
|------------------------------------|--------------------------------------|
| <input type="checkbox"/> Animals | <input type="checkbox"/> Great Finds |
| <input type="checkbox"/> Business | <input type="checkbox"/> Real Estate |
| <input type="checkbox"/> Equipment | <input type="checkbox"/> Vehicles |

SUMNER LAKE, 0 RIVER RANCHES ROAD, (at intersection with State Road 203). Lot just over 20 acres. Scenic views, just west of lake. \$18,000. Big Mesa Realty, 575-456-2000. Paul Stout, broker, NMREL 17843, 575-760-5461. www.bigmesarealty.com

FOR SALE "EL CASINO" 320 California Street in Roy, NM. 100 year old rock and adobe efficiency. Interior is mostly remodeled. New plumbing, new bath and new windows. Heated with propane heater. Has a 16 ft. x 16 ft. workshop with 2 1/2 carports. Steel work for fence is done. Disabled Vietnam Veteran needs to sell. Asking \$65,000. for five lots, house and workshop. Contact James Capell at 865-585-0426 or 423-737-1677 for more information.

DATIL, COYOTE TRAIL, BLUEBIRD ROAD AND SUGARLOAF TRAIL. Sugarloaf Mountain Subdivision. Choice of eight lots just over five acres each. \$12,500. per lot. Big Mesa Realty, 575-456-2000, Paul Stout, broker, NMREL 17843, 575-760-5461. www.bigmesarealty.com

DATIL, 40 ACRE TRACT EAST OF CRISWELL ROAD (Forest Road 6A) and a 40 acre tract East of Red Feather Tank Road (off Criswell Road). Vacant land. Starting at \$24,000. Big Mesa Realty, 575-456-2000, Paul Stout, broker, NMREL 17843, 575-760-5461. www.bigmesarealty.com

TUCUMCARI, 1120 S. SARATOGA, 1.5 acres fronting US 54 (Mountain Road). \$20,000. Big Mesa Realty, 575-456-2000, Paul Stout, broker, NMREL 17843, 575-760-5461. www.bigmesarealty.com

PORTALES-ARCH, 1884 STATE ROAD 88. 3-bedroom, 4-bath home on just over one acre. Attached carport. Two wells. \$230,000. Big Mesa Realty, 575-456-2000, Paul Stout, broker, NMREL 17843, 575-760-5461. www.bigmesarealty.com

CLOVIS, 809 S. PRINCE. Vacant land just under five acres south of intersection of Brady and Prince. Commercial. \$200,000. Big Mesa Realty, 575-456-2000, Paul Stout, broker, NMREL 17843, 575-760-5461. www.bigmesarealty.com

AIRPORT FOR SALE, FAA ID NM70 - Rodeo, on 437 acres with compacted dirt runway, home and hangar. Health forces sale. Call 575-557-2343 or email aviation@vtc.net for more details.

SANTA ROSA, 0000 WILL ROGERS DRIVE, 26 acres close to I-40 and old Route 66. Commercial potential. \$450,000. Big Mesa Realty, 575-456-2000, Paul Stout, broker, NMREL 17843, 575-760-5461. www.bigmesarealty.com

SANTA ROSA, 0 EAST OF LOS TANOS CREEK. Hollywood Ranch Subdivision. Ten acres with great views of surrounding mesalands. \$10,000. Big Mesa Realty, 575-456-2000, Paul Stout, broker, NMREL 17843, 575-760-5461. www.bigmesarealty.com

SAN MARCIAL, 27A WINCHESTER ROAD. Willow Springs Ranch Subdivision, 432 acres in the foothills of the Chupadera Mountains. Close to I-25. \$390,000. Big Mesa Realty, 575-456-2000, Paul Stout, broker, NMREL 17843, 575-760-5461. www.bigmesarealty.com

FOR SALE - 1986 REMINGTON MANUFACTURED HOME, 16' x 58', plus 2-bedroom/office space. Asking \$12,000. Located in Cuyamungue, NM. Call 505-577-0756 for more information.

SEVEN ACRES IN ARROYO SECO NEAR ESPANOLA, ABC The Law Road. Property has a 1,200 sq. ft. double wide mobile home and 2,500 sq. ft. garage with two 12' stall doors. Private well. Zoned for commercial small manufacturing. \$350,000. Call 505-690-3135 for more information.

TWO 80' TIERED LEVEL LOTS IN CLOUDCROFT. Upper lot, \$95,000. and lower lot, \$90,000. Electricity, water and sewer at property's edge. Lots are 140 yards from center of town. Good for cabin, mobile home or RV parking. Village maintained road. Call 915-479-0522 for more information.

Vehicles

1990 RANGER, 18 FT., 363V COMANCHE BASS BOAT with 150 Johnson. \$5,000. Call 505-239-9541 for more information.

Advertise in *enchantment*

Advertising in *enchantment* is both effective and a great value.

We can accommodate just about any display ad size, and significant discounts apply for multi-edition and larger ad buys. Our team is also available to help with ad design, though a modest fee may apply.

For more information, contact Shaylyn Hancock at 505-252-2540 or enchantmentads@nmelectric.coop.

youth art

April's Topic:

Draw your family pet and share with readers.

May's Topic:

Silver Star Service Banner Day is May 1. Draw a thank-you for those who received the Silver Star.

Send Your Drawing

By mail: Youth Editor
614 Don Gaspar Ave.
Santa Fe, NM 87505

By email:
enchantment@nmelectric.coop

Deadline: Submit by the 9th, one month prior to publication.

Hooray! Winners Get Paid: \$15

Have a Youth Art Topic?

Email or mail to the addresses above, or call 505-982-4671.

5 items to include on the back of your drawing, otherwise YOU ARE DISQUALIFIED:

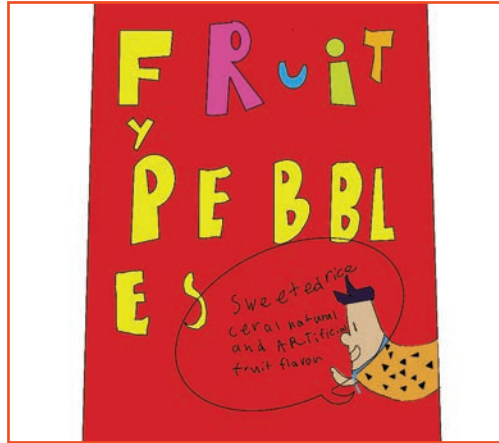
1. Name
2. Age
3. Mailing Address
4. Phone
5. Electric Co-op

*Accepted artwork up to age 13.

DON'T FORGET THESE ITEMS!

What's Your Breakfast of Champions? Congratulations to the Winners

Daleigh Bean • Age 11
Central Valley Electric Cooperative



Joshua Hibbard • Age 9
Otero County Electric Cooperative



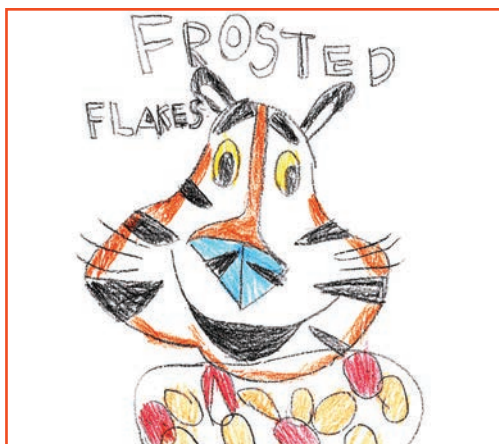
Lukrik Hibler • Age 11
Central New Mexico Electric Cooperative



Aria Klebold • Age 8
Farmers' Electric Cooperative



Dylan Owens • Age 8
Continental Divide Electric Cooperative



Ariana Roybal • Age 6
Jemez Mountains Electric Cooperative



3,000-Year-Old Beauty Secret Revealed

Turquoise — the original fashion icon — comes full circle for an amazing price.

She's been around for thousands of years, but she's never gone out of fashion. We're talking turquoise, one of the world's most ancient gems. Egyptian queens adorned themselves with turquoise jewelry more than 3,000 years ago. And the blue beauty is even more coveted now than she was a millennia ago.

Do you know someone who's even more beautiful now than when you first met? Then the Timeless Turquoise Pendant is for them — a stylish circle formed from seven total carats of natural turquoise and exquisite sterling silver metalwork. And the price? Let's just say we made sure timeless was attainable for less than you'd think.

Time is running out for timeless turquoise. Just because turquoise is timeless, doesn't mean supplies of it will last forever. Turquoise is only found a few places on Earth. Typically unearthed in arid climates like the American Southwest and Egypt's Sinai Peninsula, turquoise requires a delicate balance of minerals and water to achieve its gorgeous range of blues. But even when conditions are optimal for turquoise to form, finding stones of gem-worthy quality is a challenge. There are very few turquoise mines left, and then, less than 5% of turquoise mined worldwide is of jewelry condition, making it rarer to come by than even diamonds.

There are turquoise and sterling silver pendants out there for over \$1,200. And while genuine turquoise can garner a pretty penny, there's no reason to be paying a designer price when we can bring you designer pieces for a remarkable price.

100% Satisfaction Guaranteed. Try the Timeless Turquoise Pendant for 30 days. If it fails to delight, just send it back for a refund of the item price.

Limited Availability. These are handcrafted artisan pieces, and we only have so many. Call today.

Jewelry Specifications:

- Natural turquoise in .925 sterling silver settings

Timeless Turquoise Collection

A. Pendant (7 ctw) \$299†	\$79 +s&p Save \$220
B. 18" 3-Strand Sterling Silver Cable Chain	\$89 +s&p
Pendant & Chain \$378†	\$99 +s&p Save \$279
C. Earrings (14 ctw) \$399†	\$149 +s&p Save \$250
Pendant, Chain & Earrings \$777	only \$249 +s&p Best Value!

† Special price only for customers using the offer code versus the price on Stauer.com without your offer code.

Call now and mention the offer code to receive your collection.

1-800-333-2045

Offer Code **TTC21-02**

You must use the offer code to get our special price.

Stauer®

14101 Southcross Drive W., Ste 155, Dept. TTC21-02, Burnsville, Minnesota 55337 www.stauer.com



Rating of **A+**



7 carats of
genuine turquoise
ONLY \$79

B.



A.

Pendant enlarged to show luxurious color

"...turquoise is becoming rarer and more valuable because less of it is being discovered... the very best turquoise is more valuable than diamonds."

— The Jewellery Editor, 2021



C.

Stauer... Afford the Extraordinary.®



Advertising in

enchantment

Advertising in *enchantment* is both effective and a great value. We can accommodate just about any display ad size, and significant discounts apply for multi-edition and larger ad buys. *enchantment* is distributed monthly to more than 113,000 homes and businesses covering about 80% of the state's landmass. Independent reader research estimates monthly readership of more than 339,000.

The *enchantment* digital edition extends its reach of the magazine.

Ad Size	Annual Frequency			
	1x	3x	6x	12x
		5% Disc.	10% Disc.	20% Disc.
Full Page	\$2,860	\$2,720	\$2,575	\$2,290
1/2 Page	\$1,495	\$1,420	\$1,345	\$1,200
1/3 Page	\$1,040	\$990	\$940	\$835
1/6 Page	\$550	\$525	\$495	\$440
Col. Inch	\$120	\$115	\$110	\$95



enchantment also uses Facebook to further the reach of local display advertisers. If interested, please email: enchantmentads@nmelectric.coop for more details.