



Farmers' Electric Board of Trustees Appoints Nominating Committees for Districts 3 & 5

The Board of Trustees in their January 26, 2023 meeting appointed the 2023 Trustee Candidate Nominating Committees as follows:

District No. 3 (Fort Sumner), will meet at FEC's Fort Sumner Office, Fort Sumner, NM, on February 21, 2023, beginning at 11:30 a.m.

Committee Members:

Randel Mansell
Wayne Sleep
Kristin Wilton

District No. 5 (Tucumcari), will meet at Del's Restaurant, Tucumcari, NM, on February 23, 2023, beginning at 11:30 a.m.

Committee Members:

Lou Briscoe
Thelma Jo (TJ) Riddle
Domingo Gonzales

The Cooperative's Bylaws state, "A nominating committee consisting of three members from each district from which a trustee is to be elected shall be appointed by the Board of Trustees not less than 60 days (March 14, 2023) or more than 120 days (January 13, 2023) before the Annual Meeting. Each committee shall meet no less than 45 days (March 29, 2023) before the annual meeting and select one nominee for trustee from their district. The nomination shall be posted at the principal office of the Cooperative immediately following the committee meeting."

In order to be eligible to become or remain a trustee, a person must:

- (a) Be a member of the Cooperative.
- (b) Be a bona fide resident of his trustee district and a permanent occupant receiving electrical service from the Cooperative at his primary residential abode.
- (c) Not be in any way employed by a major supplier of electric energy or merchandise to the Cooperative.
- (d) Not be employed by or have a close relative employed by the Cooperative in any position.

These Positions Are For Three-Year Terms

Furthermore, in accordance with the Bylaws of the Cooperative, any qualified member of the Cooperative residing in Districts 3 or 5 wishing to be on the Annual Meeting ballot as a candidate, may do so by petition. Article IV, Section 3(d) reads: "Any fifty (50) members, in good standing with the Cooperative, residing in a district from which a trustee is to be elected, may make nominations by petition for a trustee from that district, providing such nominating petition is filed in the principal office of the Cooperative not less than 20 days prior to the annual meeting."

The filing deadline this year is April 21, 2023. If you have any questions, call Antonio Sanchez, Jr. at 575-762-4466 in Clovis.



Message from the desk of the CEO....



Antonio Sanchez, Jr., CEO

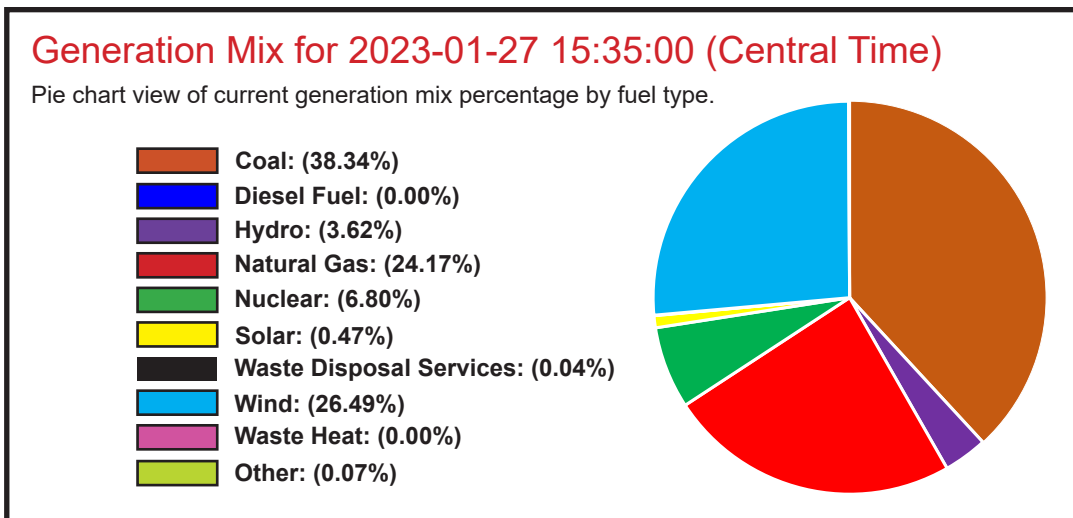
Grid Stability... How It Works

Recently, a member of the cooperative asked, “What is required in order to maintain grid stability regarding generation from wind and solar?” This is an interesting question, but most definitely, a valid question. Grid stability to Farmers’ Electric Cooperative pertains to our G&T provider, Western Farmers’ Electric Cooperative (WFEC) having access to sufficient generation capacity from the Southwest Power Pool (SPP) Integrated Marketplace.

The SPP generation mix of resources is comprised of coal, diesel fuel, hydro, natural gas, nuclear, solar and wind. WFEC purchases all of their power out of the SPP but also generates into the SPP. The SPP Integrated Market’s generation mix varies day-to-day and operates on a day-ahead basis. This market was launched on March 1, 2014, and by function, coordinates next-day generation across the region to maximize cost-effectiveness. It also provides participants, such as WFEC, with greater access to reserve energy and to facilitate the integration of renewable resources. It focuses on reliability, congestion management, cost, and balancing to ensure a continuous flow of electricity to our homes and businesses, which is vital to our economic health and quality of life.

Therefore, to ensure grid stability, the SPP will evaluate current grid conditions to ensure they have sufficient generation to meet demand and available reserves. Weather, environmental, and operational factors are the key components to ensure normal operations. If it’s really hot or really cold, demand is increased. If the wind isn’t blowing or blowing enough, this renewable resource is not available in the generation mix. The same is true for solar. Depending on the time of year or the weather itself (cloudy and overcast days), insufficient solar resources are not available. Although we feel as though here in the plains of eastern New Mexico, the wind is always blowing, there are times when it’s not sufficient for providing much help to the 14 states served out of the SPP.

To give you an idea of what a recent daily supply of generation resources were, I looked on the SPP’s website. Here’s the snapshot in time that I found:



See GRID STABILITY on PAGE 3

Board of Trustees:



Mike West
President



George Dodge
Vice-President



Donnie Bidegain
Sec. - Treas.



Pat Woods
Trustee



Ernest Riley
Trustee



Justin Barnes
Trustee



Judy Smith
Trustee

POWER SOURCE

is published bi-monthly by Farmers’ Electric Cooperative, Inc.

Thom J. Moore,
Editor
thom@fecnm.org

We are on-call 24 hours each day, 365 days each year, to serve your electric power needs

“After Hours”
Outage Reporting:
(800) 445-8541

All Other Calls:
Clovis
(575) 762-4466
Fort Sumner
(575) 355-2291
Santa Rosa
(575) 472-3971

GRID STABILITY *from* PAGE 2

As one can see in the chart, at the time of this snapshot on January 27, wind accounted for 26.4% of the SPP generation mix, and solar accounted for 0.47% off the generation mix at that instance in time. It's also apparent that we are in one of the lower, solar producing times of year (shorter days with respect to sunlight).

On March 29, 2022, the SPP set a new renewable energy penetration record of 90.2%, beating the previous record of 87.5% set May 8, 2021. This means that SPP served 90.2% of the demand for electricity across its 14-state service territory with renewable energy resources and marked the first time a regional transmission organization served more than 90% of its load with renewables. Of total demand, 88.5% was served by wind. Back in March 2022, the SPP had more than 66 GW (gigawatts – 66 billion watts) of renewables in its generator interconnection queue, in line to be connected to the power grid.

As previously mentioned, cost is a key factor in the generation type selected. Thanks to production tax credits that many of our solar and wind producers received when these farms were constructed, the price of wind and solar into the market are very attractive compared to fossil fuel generation. Therefore, when they're available, they're preferred. From a reliability perspective, when renewables are not available or are not sufficient to cover the demand on the SPP grid to maintain stability, fossil fuel generation is required. Fossil fuel generation is definitely a more costly option, but it is required to ensure system reliability. It is important to note that in 2022, upwards of 38% of the power FEC purchased from our wholesale power provider and resold to our members came from green, renewable resources. We expect this number to rise to over 40% during calendar year 2023.

This higher priced generation is a reason that many folks are looking towards distributed generation resources such as wind and rooftop solar. This is another topic for a future newsletter that I plan to share with you soon.

Until next time!

Antonio Sanchez, Jr.

Need Help with Your Home Heating Bills?



The Low-Income Home Energy Assistance Program (LIHEAP) provides assistance with paying heating costs in the winter months to qualifying individuals and families.

Applications are now being accepted on a first-come, first-served basis, as long as funds are available. Businesses are excluded from receiving benefits.

LIHEAP is not administered by Farmers' Electric Cooperative, but rather through the U.S. Department of Health and Human Services and is operated by the New Mexico Human Services Department (HSD).

The amount of financial help available varies based on income, the number of people in a household, and other factors. LIHEAP eligibility is determined by and through the application process by HSD.

According to HSD, the program is designed to lower the energy burden for low-income New Mexico households that pay a disproportional amount of their income for home energy costs. Contact your local HSD field office to apply or for more information, printable applications and facts on LIHEAP can be found at: www.hsd.state.nm.us/lookingforassistance/low_income_home_energy_assistance_program/

Annual Meeting!

SAVE THE DATE

We look forward to visiting with you on Saturday, May 13, 2023, at the Cooperative's 85th Annual Meeting of Members. The meeting will be held in San Jon, New Mexico at the San Jon High School gym. Prizes will be awarded and lunch will be served following the business meeting.

Because Farmers' Electric is locally-owned and operated, your involvement is crucial. Mark your calendar today and plan to attend the Annual Meeting of your electric cooperative.

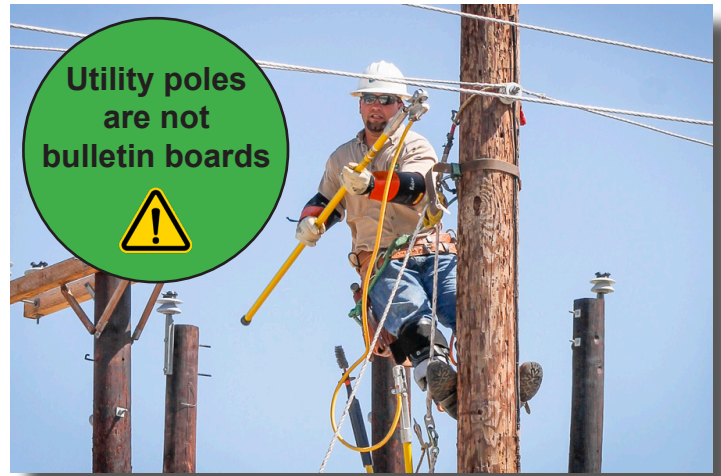
Keep Lineworkers Safe: Don't attach anything to utility poles

Political signs, yard signs, flags, basketball goals, garage sales signs, clothes lines, or any other attachments to utility poles can be very dangerous – even life-threatening – to the lineworkers who maintain our vital lines of electricity.

The clamped (hooks) safety boots used by lineworkers to climb poles are vulnerable to becoming snagged on staples and nails embedded in poles. Foreign objects can also tear utility workers' protective fire retardant (FR) clothing, which is the first line of protection from being shocked and/or burned by electricity. They can also injure workers despite the safety gear they wear to avoid contact with rough surfaces.

Posting items to poles can be a public safety hazard as well. The materials posted on the poles not only distract people as they drive, but they also degrade the quality, effectiveness, and stability of the wood.

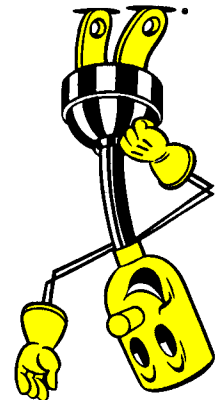
It is also just as important to avoid tampering with or disrupting the guy wires that surround some poles. Please educate your children not to play or swing on them. Also, when working in the yard around guy-wired poles, keep your distance. If you ever see a pole or guy wires that appear to have been damaged, please call Farmers' Electric Cooperative at (575) 762-4466.



Climbing Higher!

Two employees recently completed the Merchant's Powerline Job Training and Safety Program. (Left) Robert "Bobby" Garcia (San Jon) receives his certificate from FEC CEO, Antonio Sanchez. (Right) Allen Reed (San Jon) receives his certificate from FEC CEO, Antonio Sanchez.

The Merchant's Program is a distance-learning curriculum tailor-made for entry-level electric utility personnel. The program most commonly serves as technical instruction for use in an apprenticeship program leading to journeyman certification when coupled with structured on-the-job training. This four-year program is one of the most comprehensive training programs for powerline personnel. Congratulations Bobby and Allen!



RESORTED
STANDARD
U.S. POSTAGE PAID
CLOVIS, NM
PERMIT NO. 64

FARMERS' ELECTRIC COOPERATIVE, INC.
OF NEW MEXICO
3701 Thornton St., P.O. Box 550
Clovis, New Mexico 88102-0550