

# FEC POWER

## Source

Vol. 24 No. 03

Farmers' Electric Cooperative, Inc. is an equal opportunity provider and employer



## Nominating Committee Reports for the 2020 Annual Meeting

District No. 3, (Ft. Sumner) and District No. 5, (Tucumcari), Nominating Committee meetings were held on March 10 and March 12, 2020.

**District No. 3** Committee, as appointed by the Board of Trustees, met at FEC's Ft. Sumner office in Ft. Sumner on March 10, 2020. Following deliberations, **Mike West** was nominated by the committee to represent District No. 3.

**District No. 5** Committee, as appointed by the Board of Trustees, met at Del's Restaurant in Tucumcari on March 12, 2020. Following deliberations, **Paul Quintana** was nominated by the committee to represent District No. 5.

## My Co-op

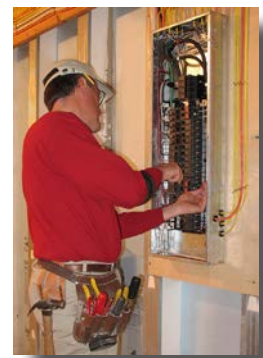
Furthermore, in accordance with the Bylaws of the Cooperative, any qualified member of the Cooperative residing in Districts 3 or 5 wishing to be

on the Annual Meeting ballot as a candidate, may do so by petition. Article IV, Section 3 (d) reads, "Any fifty (50) members, in good standing with the Cooperative, residing in a district from which a trustee is to be elected, may make nominations by petition for a trustee from that district, providing such nominating petition is filed in the principal office of the Cooperative not less than 20 days prior to the annual meeting."

The filing deadline this year is **April 17, 2020**. If you have any questions, or wish to have more information regarding the proceedings, please call Lance Adkins at the Cooperative's Clovis office at 800-445-8541 or 575-762-4466 or by email at [lance@fecnm.org](mailto:lance@fecnm.org).

## Is Your Electrician a Professional?

*Even the handiest of handymen leave electrical work to licensed, professional electricians*



Electricity can be dangerous in a home that's improperly wired, has overloaded circuits or has exposed or defective wiring, receptacles, or switches.

Even if the job seems simple, it's better to call an experienced electrician to do it. Most electricians have hours of on-the-job training under the supervision of a more experienced electrician and have passed an exam.

So, don't leave your electrician work to your handyman, your brother-in-law Bubba, or yourself. The money you spend hiring a professional will more than pay off in peace of mind and a safe home.

Manager's Message...



**Lance Adkins, GM**

## Wildfire Danger

**I**t appears Spring has sprung; I've seen apricot trees in full bloom all over town. Warm daytime temperatures and moderate temperatures overnight have folks itching to plant something. For those of us from this area, we understand winter will be back for another round or two and we can cross fresh local apricots off the list again this year.

One constant we can count on is wind. Despite recent rainfall, our area is very dry and wildfire conditions are extreme. With a generous supply of dry grass and weeds from this past summer, which are now tin-

der dry, the danger of wildfire increases significantly with higher daytime temperatures, low humidity and wind. Our neighbors to the east in Oklahoma have already experienced several catastrophic wildfires with significant property loss. Just a few weeks ago, I was driving to a meeting in Fort Sumner, as I neared Melrose, I could see the telltale sign of fire on the horizon. Fortunately, winds were calm, and the fire turned out to be a controlled burn along the Pecos river.

Wildfire, likely sparked by lightning, has been a part of the cycle of life in our area since before the first homesteads and towns were established. While lightning is still a frequent source of ignition today, we also find that human activity is often credited with creating the initial "spark".

According to fire officials, one key to protecting property is to keep the area around our home and property mowed and cleared of brush and weeds. When looking for the cause of a fire, officials note that in many cases, fires are caused by people, improperly disposing of fire-place ashes, burning weeds or trash, welding/cutting metal or even sparks from a loose chain dragging behind the truck or trailer. Several years ago, Farmers' Electric lost a truck to fire when hot exhaust system components ignited weeds and grass that had collected on the truck frame.

It is much easier for firefighters to protect homes and property if homeowners have taken ample precautions well before a fire begins by limiting fuel sources like brush and tall grass around the home and outbuildings. While working around the property be sure to inspect outside electrical wiring. Old service wires that run to out-buildings can be a fire hazard. The old weather-proof covering on the wire may be worn away by trees or fall off over time, exposing the energized conductor. If exposed wires touch each other or a well-grounded object, they will spark. If the sparks fall on dry wood, brush or grass, a fire may result. If you suspect that your wiring is in poor condition have it inspected and repaired by a qualified, licensed electrician.



- Board of Trustees:**  
**Mike West**  
*President*  
**George Dodge**  
*Vice President*  
**Donnie Bidegain**  
*Secretary-Treasurer*  
**Justin Barnes**  
*Trustee*  
**Paul Quintana**  
*Trustee*  
**Ernest Riley**  
*Trustee*  
**Pat Woods**  
*Trustee*

**General Manager:**  
**Lance R. Adkins**

### POWER SOURCE

is published monthly by Farmers' Electric Cooperative, Inc. Questions or article ideas should be directed to :  
 Thom J. Moore,  
**POWER SOURCE**  
 P. O. Box 550  
 Clovis, New Mexico  
 88102-0550  
 Phone (575) 762-4466  
 or  
 1-800-445-8541  
 thom@fecnm.org

### To Report An Outage

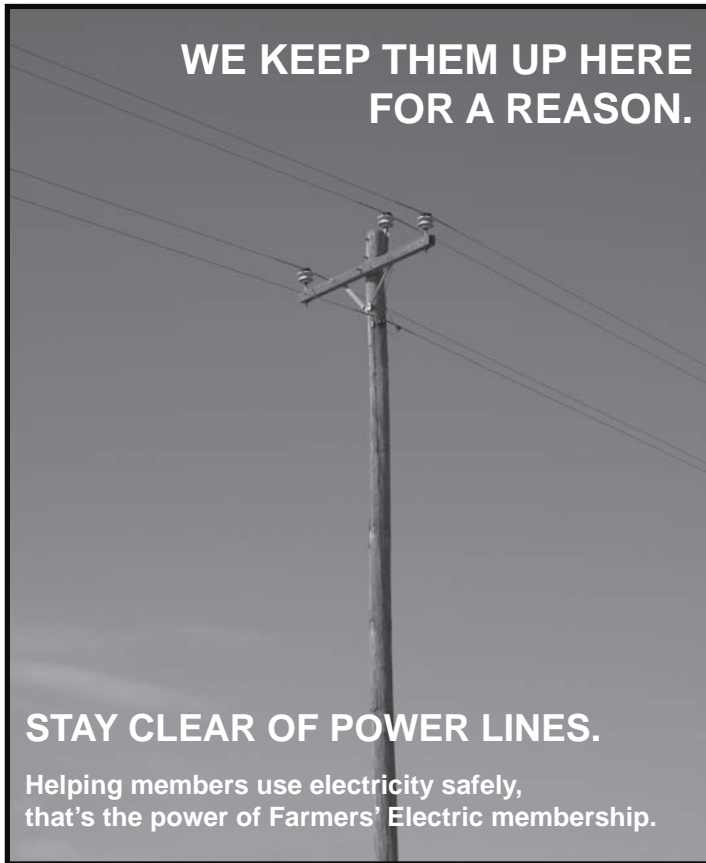
We are on-call 24 hours each day, 365 days each year, to serve **your** electric power needs.

- Clovis**  
 (575) 762-4466  
**Fort Sumner**  
 (575) 355-2291  
**Santa Rosa**  
 (575) 472-3971  
**Toll Free**  
 (800) 445-8541

WIDFIRE from PAGE 2

Fire can also start by downed powerlines and other damage caused as high wind events blow through our area. Remember, overhead High-Voltage powerlines are NOT insulated. If you notice a broken pole, cross-arm or wire, notify Farmers' Electric at once. A downed powerline is a fire hazard and a safety hazard, isolating the damaged line section quickly is key to reducing fire danger and restoring reliable service in a timely manner.

Until next month,

**WE KEEP THEM UP HERE FOR A REASON.**

**STAY CLEAR OF POWER LINES.**

Helping members use electricity safely, that's the power of Farmers' Electric membership.



**New Mexico One-Call Center**

**nm811**

Know what's below.  
Call before you dig.

[www.nmonecall.org](http://www.nmonecall.org)

(This is a free service)

We look forward to visiting with you on Saturday, May 9, 2020 at the Cooperative's 82nd Annual Meeting of Members. The meeting will be held in Santa Rosa, New Mexico, at the Santa Rosa High School gymnasium. Door prizes will be awarded and lunch will be served following the business meeting.

Because Farmers' Electric is locally owned and operated, your involvement is crucial. Mark your calendar today and plan to attend the Annual Meeting of *your* cooperative.

- Registration: 9:30 a.m. – 10:30 a.m.
- Business Meeting: 10:30 a.m.
- Reports of Officers, Trustees, and Committees
- Election of Trustees from Districts 3 & 5
- Door Prizes for adults and children



*Lunch will be served following the business meeting (approximately 11:30 a.m.)*

### Pole Inspectors in Area

Continuing through the end of September and into October, weather permitting, GLS, Ground Line Services out of San Antonio, Texas, will be testing poles for Farmers' Electric Cooperative (FEC) out of the Melrose Substation. Additionally, another crew will be inspecting our transmission loop which covers a great deal of the FEC service area.

Pole testing is a yearly maintenance program that FEC performs, however, every pole is not tested each year, rather, FEC strives to test each on a ten-year rotation.



This type of maintenance program helps to ensure that FEC can continue to supply the very safest, reliable electricity to our members.

All FEC contractors should be marked as such, "FEC Contractor" on their trucks. They should also, have a letter from FEC on their vehicle dash when parked and working. You may also see some four wheelers in and around these areas as GLS crews use these to get to most of our poles. If you have any questions about pole testing or the pole testers, please feel free to contact the office at (800) 445-8541 and ask for Member Services or Engineering.

# Ask the Energy Guys

Hey Energy Guys! I'm having a new home built and I need service. Which would be better, overhead or underground?



### PROS

- Not vulnerable to damage from tree branches
- Does not interfere with views
- No right of way (tree trimming) required
- Less susceptible to damage from vehicle collisions
- Less vulnerable to blinks when animals and branches contact lines

### CONS

- More expensive to build
- Susceptible to flooding
- Difficult to locate faults
- Expensive to repair
- Fed by overhead lines at some point, making the lines vulnerable to outages and interruptions
- Limitations on voltage that can be buried underground
- Can be vulnerable to dig-ins

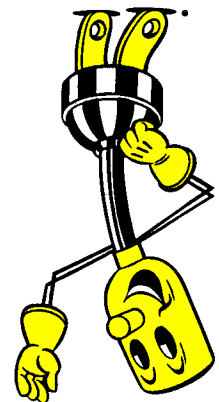
### PROS

- Lower cost
- Quicker to construct
- Easier to spot damage and faults
- Less expensive to repair and upgrade
- Can be built in any terrain
- Any voltage can be placed overhead

### CONS

- Susceptible to wind, ice, and snow
- More vulnerable to damage from trees and vegetation, which requires right of way trimming
- Vulnerable to blinks when animals and branches contact lines
- Susceptible to damage from vehicle collisions
- Less attractive

**“Owned By Those We Serve”**



PRESORTED  
STANDARD  
U.S. POSTAGE PAID  
CLOVIS, NM  
PERMIT NO. 64

**FARMERS' ELECTRIC COOPERATIVE, INC.**  
**OF NEW MEXICO**  
3701 Thornton St., P.O. Box 550  
Clovis, New Mexico 88102-0550